

## Annual Report 2012

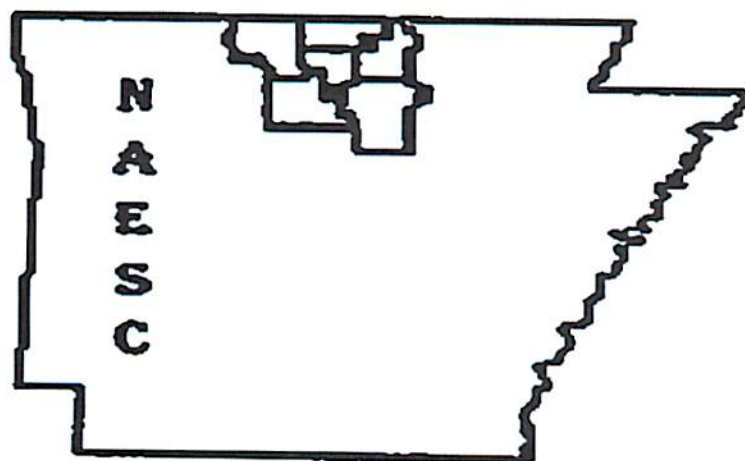


**Northcentral Arkansas Education Cooperative**

PO Box 739

99 Haley ST

Melbourne, AR 72556

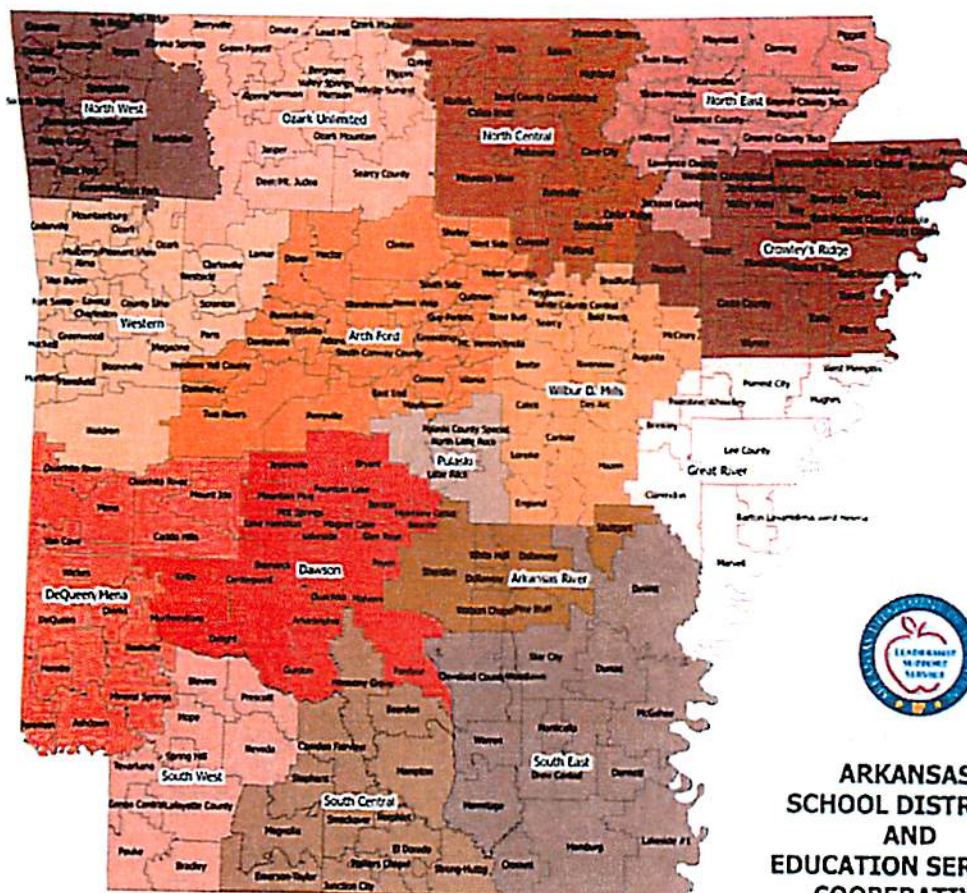


## **Table of Contents**

<b><u>Table of Contents</u></b>	<b><u>1</u></b>
<b><u>A Word From The Director</u></b>	<b><u>2</u></b>
<b><u>State Map and Mission Statement</u></b>	<b><u>3</u></b>
<b><u>Organizational Chart</u></b>	<b><u>4</u></b>
<b><u>Board of Directors and Teacher Center Committee</u></b>	<b><u>5</u></b>
<b><u>ESC Annual Report</u></b>	
I. <b><u>Governance</u></b>	<b><u>6</u></b>
II. <b><u>Staff</u></b>	<b><u>7</u></b>
III. <b><u>Teacher Center</u></b>	<b><u>9</u></b>
IV. <b><u>Administrative Services</u></b>	<b><u>9</u></b>
V. <b><u>Direct Services to Students</u></b>	<b><u>11</u></b>
VI. <b><u>Anecdotal Reports</u></b>	<b><u>11</u></b>
VII. <b><u>Employment Policies and Practices</u></b>	<b><u>13</u></b>
<b><u>Salary Schedule</u></b>	<b><u>15</u></b>
<b><u>Programs</u></b>	<b><u>16</u></b>
<b><u>Special Projects and Programs</u></b>	<b><u>33</u></b>
<b><u>Professional Development Activities Report</u></b>	<b><u>35</u></b>

## **A Word from the Director:**

**The Northcentral Arkansas Education Service Cooperative has completed another year of operations. The report of activities for the 2011-2012 fiscal year has been prepared by our staff to inform our member schools, the Arkansas Department of Education, members of the Arkansas General Assembly, and the Governor's office of the services we provide and our member school districts' participation in those services. From the inception of the Co-op in 1983 as one of the first five pilot cooperatives, our mission has been to provide the best services that we possibly can to our member schools. We have helped provide our districts opportunities to resources and cost saving measures that each could not have obtained without the pooling together of resources. Also, because of our strategic location and structure, the co-op is able to provide the Department of Education with assistance in executing state initiatives and with the dissemination of information in a more efficient way than could have been done otherwise. As we face the 2011-2012 school year and near future, we face changes that the Cooperative and our school districts have not faced before. With the passage of the new Teacher Evaluation Law and the advent of the Common Core State Standards that Arkansas has become a part of, many changes to the educational system are on the way. It is the endeavor of the Cooperative, and its mission, to help schools meet the challenges that these changes will require, and to provide whatever assistance we can to them so that the quality of the education our students receive will provide them with the resources they will need to succeed in the changing, informational world.**

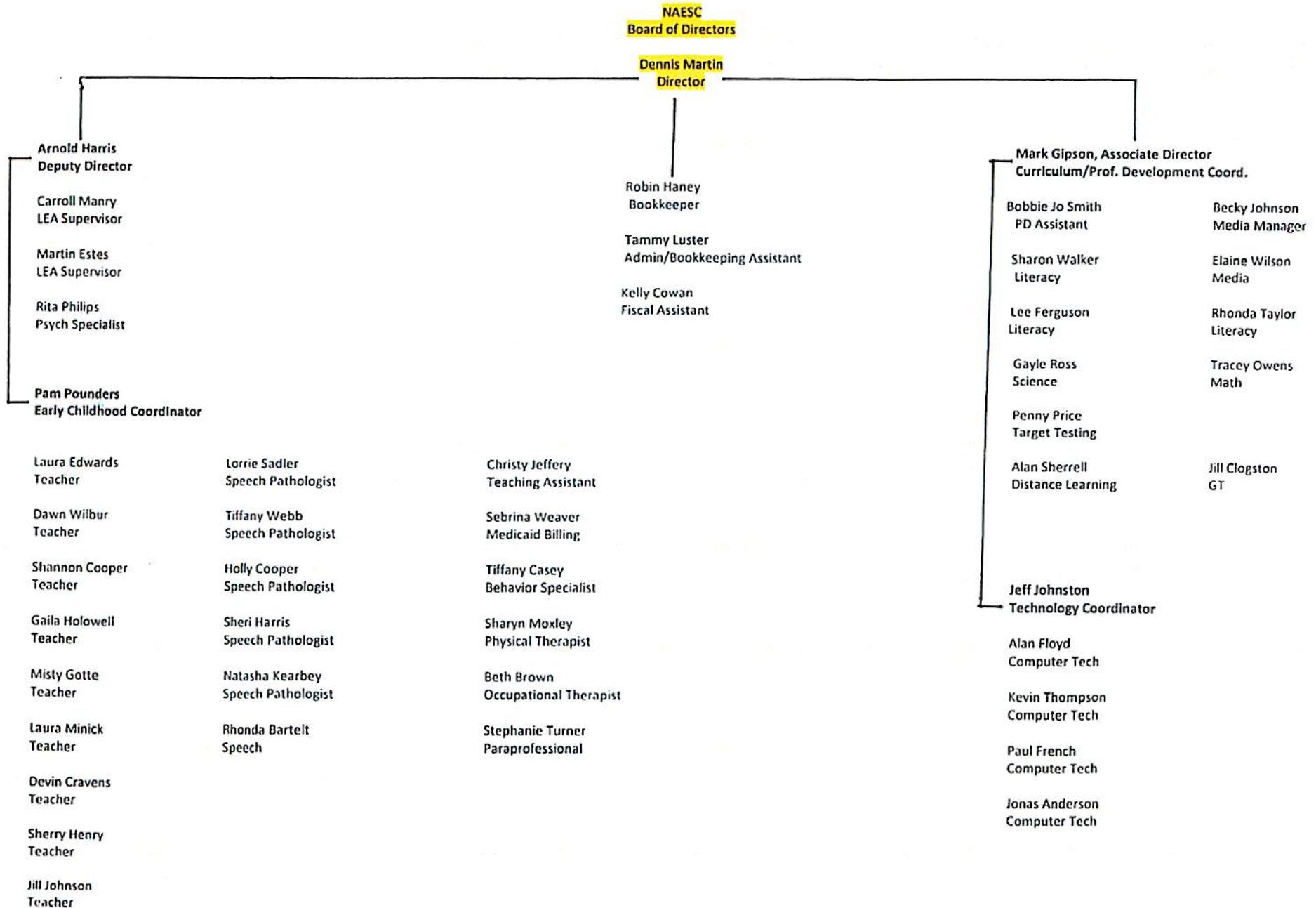


## ARKANSAS SCHOOL DISTRICTS AND EDUCATION SERVICES COOPERATIVES

### MISSION

The mission of the Northcentral Arkansas Education Service Cooperative is to provide services to assist member districts in their efforts to improve instruction and enhance student lives. The co-op strives to obtain the best people available to help train our teachers, seek out every new resource, model every technological or instructional tool teachers can use to improve instruction for kids, to help schools meet ever-increasing accountability for student achievement, and to give our students a better opportunity to do the things in life that will make them productive, successful citizens of our communities.

# N.A.E.S.C. Organizational Chart



**School Districts served in Northcentral****Education Service Cooperative**

Batesville, Calico Rock, Cave City, Cedar Ridge, Concord, Highland, IZARD County, Mammoth Spring, Melbourne, Midland, Mountain Home, Mountain View, Norfolk, Salem, Southside, Viola

**Officers of the Board**

Name	Position	School District
Mr. John May	President	Viola
Mr. Steven Green	Vice-President	Cave City
Mr. Roger Rich	Secretary	Southside

**Members of the Board**

Name	Position	School District
Dr. Randy Willison	Member	Batesville
Mr. Jerry Skidmore	Member	Calico Rock
Dr. Ann Webb	Member	Cedar Ridge
Dr. Michael Davidson	Member	Concord
Mr. James Floyd	Member	Highland
Mr. Fred Walker	Member	IZARD County Consolidated
Mr. David Turnbough	Member	Mammoth Spring
Mr. Gerlad Cooper	Member	Melbourne
Mr. Dean Stanley	Member	Midland
Dr. Lonnie Myers	Member	Mountain Home
Mr. Rowdy Ross	Member	Mountain View
Mr. Mike Seay	Member	Norfolk
Mr. Ken Rich	Member	Salem

Each participating school district in the Northcentral Educational Service Cooperative will have one representative on the Teacher Center Committee. The ratio of classroom teachers to administrative/support personnel shall be as close to 2:1 as is possible. Each committee member shall be elected for a term of three years.

Member	District	Position	Term Expires
Cindy Merritt	Batesville	Elementary	2012-2013
Ashley Dellinger	Calico Rock	Elementary Administrative	2011-2012
Crystal Bradley	Cave City	High School	2011-2012
Don Balentine	Cedar Ridge	Elementary	2011-2012
Sandy Brackett	Concord	Administrative	2012-2013
Diane Counts	Highland	Middle School	2011-2012
Michelle Walker	IZARD County Consolidated	Middle School	2013-2014
David Turnbough	Mammoth Spring	Administrative	2013-2014
Melissa Cooper	Melbourne	Administrative	2012-2013
Bani' Meharg	Midland	Elementary	2011-2012
Devona Pendergrass	Mountain Home	High School	2013-2014
Tanya Stewart	Mountain View	Middle School	2012-2013
Janet Wallace	Norfolk	Middle/High School	2012-2013
Vicki Ragan	Salem	Elementary	2013-2014
Janie Hall	Southside	High School	2013-2014
James Kerr	Viola	Administrative	2011-2012

## Education Service Cooperative (ESC) Annual Report

Date: 6/15/2012 LEA#: 33-20 ESC#: \_\_\_\_\_

ESC Name: Northcentral Arkansas Education Service Cooperative

Address: 99 Haley Street, P.O. Box 739, Melbourne, AR. 72556

Director: Dr. Dennis Martin

Teacher Center Coordinator: Mark Gipson

Names of Counties Served: Baxter, Fulton, Sharp, Izard, Stone, Independence, Cleburne

---

Number of Districts: 16 Number of Students: 18,784

Number of Teachers: 1,640

### Governance:

- A. How is co-op governed? Board of Directors ☒ Or Executive Committee \_\_\_  
How many members on Board? 16  
Executive Committee? No  
How many times did Board meet? 10  
When is regular meeting? Second Friday of Each Month  
Date of current year's annual meeting: July 11, 2012
- B. Does co-op have Teacher Center Committee? Yes ☒ No \_\_\_  
If yes, then:  
How many members on Teacher Center Committee? 16  
How many members are teachers? 13  
How many times did Teacher Center Committee meet? 3  
When is regular meeting? Day after IL meetings
- C. When was most recent survey/needs assessment conducted? January of 2012
- D. Have written policies been filed with the Arkansas Department of Education? Yes ☒ No \_\_\_



## II. Staffing

Please list (or attach a list of) all staff members of the co-op (including those housed at the co-op and paid through other sources), their titles and the salary funding sources for the positions. Place an asterick (\*) beside those who are housed at the co-op only and whose salary does not flow through the co-op's budget.

### Northcentral Arkansas Educational service Cooperative Employees

2011-2012

S=State, F=Federal, H=Head Start, M=Medicaid, P=Private Funding, B=Base Funds, D=District Allocations

Name	Position	Funding Source	New Hire	Resigned
Dennis Martin	Director	B		
Arnold Harris	Deputy Director/Workforce Education Coord.	B/S		
Mark Gipson	Associate Director/TCC	B		
Pam Pounders	Early Childhood Coordinator	S		
Lee Ferguson	Literacy Specialist	S		
Rhonda Taylor	Literacy Specialist	S		
Sharon Walker	Literacy Specialist	S		
Tracey Owens	Math Specialist	S		
Gayle Ross	Science Specialist	S		
Jill Clogston	G.T. Coordinator	S		
Alan Sherrell	D.L. Coordinator	S		
Jeff Johnston	Tech. Coordinator	S		
Rita Phillips	School Psychology Specialist	D		
Tiffany Casey	EC Behavior Specialist/Teacher	S		
Laura Edwards	EC Special Education Teacher	D		
Shannon Cooper	EC Special Education Teacher	S		
Sherry Henry	EC Special Education Teacher	F		
Gaila Holowell	EC Special Education Teacher	F		
Laura Minick	EC Special Education Teacher	D		
Dawn Wilbur	EC Special Education Teacher	S		
Devin Cravens	EC Special Education Teacher	F	*	
Holly Cooper	EC Speech Language Pathologist	S		
Sheri Harris	EC Speech Language Pathologist	S		
Natasha Kearbey	EC Speech Language Pathologist	S		
Tiffany Webb	EC Speech Language Pathologist	S		
Sandy Daniels	Itinerant Certified Employee	D		
Jennifer Humphries	Itinerant Certified Employee	D		
Reta Erwin	Itinerant Certified Employee	D		
Melanie Cornelius	Itinerant Certified Employee	D		



Sherry Ball	Itinerant Certified Employee	D		
Teresa Sanders	Itinerant Certified Employee	D		
Beth Brown	EC. Occupational Therapist	S		
Sharyn Moxley	EC. Physical Therapist	S		
Kevin Thompson	Computer Technician	D		
Paul French	Computer Technician	D		
Jonathan Gotte	Computer Technician	D		
Alan Floyd	Computer Technician	D/B		
Jonas Anderson	Computer Technician	D	*	
Robin Haney	Bookkeeper	B		
Tammy Luster	Assistant Bookkeeper/Administrative Assistant	B		
Bobbie Jo Smith	Administrative Assistant for PD	B		
Elaine Wilson	Media Paraprofessional	B		
Sebrina Weaver	EC Medical Clerk	S		
Christy Jeffrey	EC Teaching Assistant	D		
Penny Price	Target Testing Coordinator	D	*	
Misty Gotte	EC Special Education Teacher	S		
Jill Johnson	EC Special Education Teacher	S		
Lorrie Sadler	EC Speech Language Pathologist	S		
Rhonda Bartelt	EC Speech Language Pathologist	S/D		
Stephanie Turner	Paraprofessional	S		
Kelly Cowan	Fiscal Assistant	B		

### III. TEACHER CENTER

Please attach a list of all in-service training/staff development workshops offered through the co-op, including month offered, topic, number of districts participating, number of participants and location of workshops. Place an asterisk (\*) beside those which provided curriculum assistance. Include a cumulative total of participants. See attached form.

A. Does the co-op provide media services to schools? YES [ X ] NO [ ]

If yes, then:

Approximate the number of titles in media center: 12,067

Does the co-op provide delivery to the districts? YES [ X ] NO [ ]

How many districts participate in the media program? 16

How many titles (including duplicate counts) were provided to schools during this current year? 4,168

Do districts contribute dollars to the media services? YES [ X ] NO [ ]

If yes, then:

How are media / technology charges per district determined (formal or per ADM)? Please describe: \$1 per ADM

Does the co-op operate a "make-and-take" center for teachers? YES [ X ] NO [ ]

If yes, then:

How many teacher visits have been made to the center? (Count all teachers who have visited the center, using duplicate counts for teachers who have visited the center more than once. 6,429

### IV. ADMINISTRATIVE SERVICES

Please check administrative services offered through the co-op:

[ X ] Cooperative purchasing

[X] Conduct Annual Needs Assessment /Planning assistance

[ X ] Special education services

[ X ] Gifted and talented assistance

[ X ] Grant writing assistance

[ X ] Personnel application

[X] Assist/support with Evaluation procedures (OSR, ACSIP Monitoring, GT Program evaluation, etc.)

- ☐ Migrant student Identification
- ☒ Bookkeeping assistance
- ☒ Technology training
- ☒ Curriculum support (Common Core State Standards)
- ☐ Business Management training
- ☒ Computer technician
- ☒ C.C.R.P.P. Administration/Collaboration
- ☒ E-Rate applications
- ☒ Assessment data analysis
- ☒ Instructional facilitator training
- ☒ TARGET interim assessments
- ☒ Math/Science/Literacy specialists
- ☒ Numerous professional development opportunities for teachers
- ☒ Administrators and Local Board Members Training
- ☐ Other (please specify)
- ☐ \_\_\_\_\_
- ☐ \_\_\_\_\_

## V. DIRECT SERVICES TO STUDENTS

Please check the student services provided through the co-op:

- ☐ Student assessment program
- ☐ Itinerant teachers -- please list areas: (ECSE, SPED)
- ☒ Occupational therapy and physical therapy
- ☒ Transition Assistance
- ☐ Mentor programs (Ex. Foster Grandparents)
- ☒ Gifted/talented programs: 16 participating districts
- ☐ Digital instruction (Ex. AR iTunes U, podcasts)
- ☒ Speech Pathology Services
- ☒ HIPPY
- ☒ Low incidence handicapped (vision/hearing)
- ☐ Other (Please specify):

## VI. ANECDOTAL REPORTS

Please attach three or four descriptions of activities which demonstrate partnerships, agreements or creative ways that the co-op has assisted local districts. The co-op personnel may write the reports, or the descriptions may be written by local schools served by the co-op. These reports may also include letters sent to the co-op or evaluations of a co-op activity.

- The co-op hosts institutes for groups of our member district's administration leaders. Our Superintendent's Institute provides specialized professional development to Superintendents and Assistant Superintendents in the areas of Data Disaggregation, Parental Involvement, Instructional Leadership, Lottery Training, Curriculum Issues, Facility Issues, Legislative Issues and Acts 61 and 730 Fiscal Management Training. Similarly, the co-op also hosts an Institute for Instructional Leaders of the member districts with an additional focus on their school's data, how well the students compare across the co-op, and how to use the data to improve student performance on the mandated state tests. Both of these have been very successful and well received.
- Another area that the co-op has worked to assist districts in helping improve student achievement is the Intermittent Target Assessments (TIA). In this program, teachers

from across the state, along with recognized experts in Literacy and Math, have developed assessments that correlate to the Student Learning Expectations (SLE's) of the state mandated Benchmark Exams. By using these assessments in conjunction with the D2SC software, schools are able to assess the progress of their students in obtaining proficiency on the exams. The items of this program of intermittent assessments have been statistically measured to indicate a strong correlation to the state SLE's. It is because of this correlation that this program has become a viable predictor of student performance. This has become a very important tool for those districts who have participated.

- The Northcentral Cooperative has always assisted it's member districts in the area of school board member training. With the passage of Act 1775 of 2005, each board member must now receive 6 hours of training per year, with the newly elected members being required to receive 9 hours of training that first year. Because of this need, the co-op entered into a partnership with the Arkansas Public School Resource Center to provide this training at the cooperative, using distance learning technology to reduce travel time and costs for districts. We feel like the goal to provide convenient and appropriate training for school board members has been achieved through this program.

## VII. EMPLOYMENT POLICIES AND PRACTICES

*Act 610* of 1999 requires that each educational service cooperative report the following information:

### EMPLOYED

Number of new males employed by the cooperative for the 2011-2012 school year: 1  
For this number above, please provide the number in each of the following racial classifications:

1 White  
   African American  
   Hispanic  
   Asian  
   American Indian/Alaskan Native

Number of new females employed by the cooperative for the 2011-2012 school year: 5  
For this number above, please provide the number in each of the following racial classifications:

5 White  
   African American  
   Hispanic  
   Asian  
   American Indian/Alaskan Native

### TERMINATED

Number of males terminated by the cooperative during the 2011-2012 school year: 0  
For this number above, please provide the number in each of the following racial classifications:

   White  
   African American  
   Hispanic  
   Asian  
   American Indian/Alaskan Native

Number of females terminated by the cooperative during the 2011-2012 school year: 0  
For this number above, please provide the number in each of the following racial classifications:

   White  
   African American  
   Hispanic  
   Asian  
   American Indian/Alaskan Native

### SEEKING EMPLOYMENT

Number of males seeking employment by the cooperative during the 2011-2012 school year: 2

For this number above, please provide the number in each of the following racial classifications:

2 White  
     African American  
     Hispanic  
     Asian  
     American Indian/Alaskan Native

Number of females seeking employment by the cooperative during the 2011-2012 school year: 73

For this number above, please provide the number in each of the following racial classifications:

73 White  
     African American  
     Hispanic  
     Asian  
     American Indian/Alaskan Native



**2011-12  
NAESC Salary Schedule**

Years of Experience	0	1	2	3	4	5	6	7	8	9	10	11	12	13	14	15	16	17	18	19	20
<b>CERTIFIED/SUPERVISOR</b>	<b>Coordinator</b>																				
Teacher Center Coord.	56,850	57,450	58,050	58,650	59,250	59,850	60,450	61,050	61,650	62,250	62,850	63,450	64,050	64,650	65,250	65,850	66,450	67,050	67,650	68,250	68,850
LEA Spec Ed. Supervisor	60,730	61,330	61,930	62,530	63,130	63,730	64,330	64,930	65,530	66,130	66,730	67,330	67,930	68,530	69,130	69,730	70,330	80,930	81,530	82,130	82,730
Program Coordinator	60,730	61,330	61,930	62,530	63,130	63,730	64,330	64,930	65,530	66,130	66,730	67,330	67,930	68,530	69,130	69,730	70,330	80,930	81,530	82,130	82,730
<b>CERTIFIED/NON-SUPER.</b>																					
Literacy Specialist	48,180	48,780	49,380	49,980	50,580	51,180	51,780	52,380	52,980	53,580	54,180	54,780	55,380	55,980	56,580	57,180	57,780	58,380	58,980	59,580	60,180
Math Specialist	48,180	48,780	49,380	49,980	50,580	51,180	51,780	52,380	52,980	53,580	54,180	54,780	55,380	55,980	56,580	57,180	57,780	58,380	58,980	59,580	60,180
Science Specialist	48,180	48,780	49,380	49,980	50,580	51,180	51,780	52,380	52,980	53,580	54,180	54,780	55,380	55,980	56,580	57,180	57,780	58,380	58,980	59,580	60,180
Workforce Ed Evaluator	48,180	48,780	49,380	49,980	50,580	51,180	51,780	52,380	52,980	53,580	54,180	54,780	55,380	55,980	56,580	57,180	57,780	58,380	58,980	59,580	60,180
G/T Coordinator (Full time)	34,120	34,720	35,320	35,920	36,520	37,120	37,720	38,320	38,920	39,520	40,120	40,720	41,320	41,920	42,520	43,120	43,720	44,320	44,920	45,520	46,120
<b>CERTIFIED/NON 12 MO.</b>																					
Speech Therapist-198 day*	43,590	44,190	44,790	45,390	45,990	46,590	47,190	47,790	48,390	48,990	49,590	50,190	50,790	51,390	51,990	52,590	53,190	53,790	54,390	54,990	55,590
Teachers-198 day*	35,430	36,030	36,630	37,230	37,830	38,430	39,030	39,630	40,230	40,830	41,430	42,030	42,630	43,230	43,830	44,430	45,030	45,630	46,230	46,830	47,430
Teachers/MSE-198 day*	39,510	40,110	40,710	41,310	41,910	42,510	43,110	43,710	44,310	44,910	45,510	46,110	46,710	47,310	47,910	48,510	49,110	49,710	50,310	50,910	51,510
Sch Psych Spec-200 day*	40,530	41,130	41,730	42,330	42,930	43,530	44,130	44,730	45,330	45,930	46,530	47,130	47,730	48,330	48,930	49,530	50,130	50,730	51,330	51,930	52,530
<b>CLASSIFIED</b>																					
Bookkeeper	28,244	28,844	29,444	30,044	30,644	31,244	31,844	32,444	33,044	33,644	34,244	34,844	35,444	36,044	36,644	37,244	37,844	38,444	39,044	39,644	40,244
Administrative/Support Asst	25,184	25,784	26,384	26,984	27,584	28,184	28,784	29,384	29,984	30,584	31,184	31,784	32,384	32,984	33,584	34,184	34,784	35,384	35,984	36,584	37,184
Media Manager	23,854	24,454	25,054	25,654	26,254	26,854	27,454	28,054	28,654	29,254	29,854	30,454	31,054	31,654	32,254	32,854	33,454	34,054	34,654	35,254	35,854
Medical/Teaching Asst.	23,854	24,454	25,054	25,654	26,254	26,854	27,454	28,054	28,654	29,254	29,854	30,454	31,054	31,654	32,254	32,854	33,454	34,054	34,654	35,254	35,854
Sec./Paraprof.-Degree	21,814	22,414	23,014	23,614	24,214	24,814	25,414	26,014	26,614	27,214	27,814	28,414	29,014	29,614	30,214	30,814	31,414	32,014	32,614	33,214	33,814
Sec./Paraprof.-Non-Degree	20,084	20,684	21,284	21,884	22,484	23,084	23,684	24,284	24,884	25,484	26,084	26,684	27,284	27,884	28,484	29,084	29,684	30,284	30,884	31,484	32,084
Computer Tech Level 1 *	30,284	30,884	31,484	32,084	32,684	33,284	33,884	34,484	35,084	35,684	36,284	36,884	37,484	38,084	38,684	39,284	39,884	40,484	41,084	41,684	42,284
Computer Tech Level 2 *	36,404	37,004	37,604	38,204	38,804	39,404	40,004	40,604	41,204	41,804	42,404	43,004	43,604	44,204	44,804	45,404	46,004	46,604	47,204	47,804	48,404
Computer Tech Level 3/5*	38,444	39,044	39,644	40,244	40,844	41,444	42,044	42,644	43,244	43,844	44,444	45,044	45,644	46,244	46,844	47,444	48,044	48,644	49,244	49,844	50,444
Computer Tech Level 4/6*	40,484	41,084	41,684	42,284	42,884	43,484	44,084	44,684	45,284	45,884	46,484	47,084	47,684	48,284	48,884	49,484	50,084	50,684	51,284	51,884	52,484
Itinerant Vision Teacher	38,400	38,900	39,400	39,900	40,400	40,900	41,400	41,900	42,400	42,900	43,400	43,900	44,400	44,900	45,400	45,900	46,400	46,900	47,400	47,900	48,400

1. Act 1768 requires all years of in-state teaching service be allowed for positioning on the salary schedule.

2. Increments are contingent upon grant monies available.

3. Salaries are based upon 12 month contracts with the exception of 198 day teachers & 200 day SPS.

4. \*Continued Employment based on participating districts or state grant monies available.

5. The Co-op Director's salary will be indexed at 1.12 of the highest step of the Teacher's Center Coordinator's salary line.

6. The Deputy Director's salary will be indexed at 1.12 of the highest step of the Teacher's Center Coordinator's salary line.

APPROVAL DATE :

Board President:

Board Secretary:

\* Raises Steps contingent upon base funding increase on an annual basis.

Program ADE School Improvement Supervisor  
 Funding Source Arkansas Department of Education Competitive Grant ☐ Yes ☒ No

☒ Restricted ☐ Non-Restricted

**Participating Districts:**

<input checked="" type="checkbox"/> Batesville	<input checked="" type="checkbox"/> Concord	<input checked="" type="checkbox"/> Melbourne	<input checked="" type="checkbox"/> Norfolk
<input checked="" type="checkbox"/> Calico Rock	<input checked="" type="checkbox"/> Highland	<input checked="" type="checkbox"/> Midland	<input checked="" type="checkbox"/> Salem
<input checked="" type="checkbox"/> Cave City	<input checked="" type="checkbox"/> IZARD County Consolidated	<input checked="" type="checkbox"/> Mountain Home	<input checked="" type="checkbox"/> Southside
<input checked="" type="checkbox"/> Cedar Ridge	<input checked="" type="checkbox"/> Mammoth Spring	<input checked="" type="checkbox"/> Mountain View	<input checked="" type="checkbox"/> Viola

**Personnel**

Name	Position	Degree
Mark Gipson	School Improvement Advisor	Masters

**Goal:**

*The goal of this program is: 1) To facilitate school improvement efforts in local districts and schools; 2) To support/assist local school districts in developing the district level Arkansas Comprehensive School Improvement Plan (ACSIP); 3) To provide Technical Assistance to local school district related to ACSIP; 4) To support/Assist local school districts with schools in School Improvement year 3 or beyond with their school improvement efforts; 5) To support/assist local school districts develop/implement systematic and sustainable school improvement; 6) To support/assist local school districts develop/implement systematic and sustainable school improvement; 7) To support/assist local school districts research, development, and/or the acquisition of additional resources related to their school improvement efforts (both internal and external); and 8) To provide a broker of resources/point of contact between the local School District and the ADE related to the Statewide System of Support (SSOS).*

**Program Summary:**

School Improvement Supervisors assist with all areas of the School Improvement Process (ACSIP), including the Federal Program application and approval process; providing assistance with regulations and laws, responding to technical assistance requests from districts and schools; disseminating information as requested; cooperating with and participating in professional organizations. In addition to these responsibilities, the supervisors conduct on-campus visits to assigned schools and monitor school programs.

**Major Highlights of the year:**

Collaborating as a Facilitator and member of the State Specialty Team; Facilitating the District Leadership Team Meetings with local Superintendents and/or Assistant Superintendents; Providing Technical Assistance as requested.

Program Colleg Career Readiness Plannir  
 Funding Source Arkansas Department of Education Competitive Grant  
☐ Yes ☒ No

☒ Restricted ☐ Non-Restricted

**Participating Districts:**

<input type="checkbox"/> Batesville	<input type="checkbox"/> Concord	<input type="checkbox"/> Melbourne	<input type="checkbox"/> Norfolk
<input checked="" type="checkbox"/> Calico Rock	<input checked="" type="checkbox"/> Highland	<input checked="" type="checkbox"/> Midland	<input type="checkbox"/> Salem
<input type="checkbox"/> Cave City	<input checked="" type="checkbox"/> IZARD County Consolidated	<input type="checkbox"/> Mountain Home	<input type="checkbox"/> Southside
<input checked="" type="checkbox"/> Cedar Ridge	<input type="checkbox"/> Mammoth Spring	<input type="checkbox"/> Mountain View	<input type="checkbox"/> Viola

**Personnel**

Name	Position	Degree
Alan Sherrell	Distance Learning Coordinator	M.S.E.

**Goal:**

*Increase students ACT scores above 19 to avoid taking remedial classes during their Freshman year of College.*

**Program Summary:**

The ACT College Preparatory Program was replaced by College Career Readiness Planning Program (CCRPP) for college bound students. CCRPP targets those students that score 19 and below on the ACT to attempt to raise students scores above 19 to avoid taking remedial courses during their freshman year. The program was open to students in grades 10-12 if they scored below 19 in any area or was on Free & Reduced Lunches.

**Major Highlights of the year:**

The following schools participated in CCRPP: ICC, Highland, Midland, Cedar Ridge & Calico Rock. The classes were provided through CIV using the Distance Learning Labs in each of the schools. Classes were sent out through CIV from the Distance Labs of ASU/Mtn. Home, Ozarka College/Melbourne and UACCB/Batesville. Classes were offered in math, English & Reading. A total of 75 hours of instruction time was required of each class. The classes were taught over a 12 week period beginning January 7th and ending on March 24th. If the students completed the program they were allowed to take a free ACT on April 14, 2012.

Program Community Health Nurse  
Funding Source Arkansas Department of Health

Competitive Grant  
☐ Yes ☒ No

☒ Restricted ☐ Non-Restricted

**Participating Districts:**

<input checked="" type="checkbox"/> Batesville	<input checked="" type="checkbox"/> Concord	<input checked="" type="checkbox"/> Melbourne	<input checked="" type="checkbox"/> Norfork
<input checked="" type="checkbox"/> Calico Rock	<input checked="" type="checkbox"/> Highland	<input checked="" type="checkbox"/> Midland	<input checked="" type="checkbox"/> Salem
<input checked="" type="checkbox"/> Cave City	<input checked="" type="checkbox"/> Izard County Consolidated	<input checked="" type="checkbox"/> Mountain Home	<input checked="" type="checkbox"/> Southside
<input checked="" type="checkbox"/> Cedar Ridge	<input checked="" type="checkbox"/> Mammoth Spring	<input checked="" type="checkbox"/> Mountain View	<input checked="" type="checkbox"/> Viola

**Personnel**

Name	Position	Degree
Marilyn Cone	Community Health Nurse Specialist	Registered Nurse

**Goal:**

*Each school district will have increased knowledge regarding tobacco-free policies, implementation of Best Practices for tobacco prevention and cessation, nutrition, physical activity, injury prevention, Coordinatated School Health, and other public health issues.*

**Program Summary:**

The Community Health Nurse Specialist is responsible for providing technical assistance, education, and policy guidance to school district nurses and community health coalitions. The CHNS serves as a liaison between ADH/education cooperative, the schools and community.

CHNS provides technical assistance to schools regarding tobacco-free policies, implementation of Best Practices for tobacco prevention and cessation, nutrition, physical activity, injury prevention , Coordinated School Health and other public health issues.

**Major Highlights of the year:**

Provide technical assistance to area schools to: Adopt tobacco-free policies and implement best practices for tobacco prevention and cessation; Adopt policies promoting and implementing best practices for nutrition, physical activity, coordinated school health, teen pregnancy prevention and emerging public health issues; Establish school wellness committees and fulfill state and federal mandates; Inform communities of school health issues and current public health policy.

**Program** Career Education  
**Funding Source** State Grant and Carl Perkins Grant Funds **Competitive Grant**  
☐ Yes ☒ No

☒ Restricted ☐ Non-Restricted

**Participating Districts:**

<input type="checkbox"/> Batesville	<input checked="" type="checkbox"/> Concord	<input checked="" type="checkbox"/> Melbourne	<input checked="" type="checkbox"/> Norfolk
<input checked="" type="checkbox"/> Calico Rock	<input type="checkbox"/> Highland	<input checked="" type="checkbox"/> Midland	<input checked="" type="checkbox"/> Salem
<input type="checkbox"/> Cave City	<input checked="" type="checkbox"/> IZARD County Consolidated	<input type="checkbox"/> Mountain Home	<input type="checkbox"/> Southside
<input checked="" type="checkbox"/> Cedar Ridge	<input checked="" type="checkbox"/> Mammoth Spring	<input type="checkbox"/> Mountain View	<input checked="" type="checkbox"/> Viola

**Personnel**

Name	Position	Degree
Arnold Harris	Deputy Director/Career Education Coordinator	MSE + Adm

**Goal:**

*Our goal is to provide supporting resources to enable schools to initiate and maintain quality Career and Technical Education Programs.*

**Program Summary:**

NAESC serves as the fiscal agent for the consortia members with funds of \$100,431. The following activities were supported: 1. Meeting the performance standards recommended by ADE-CE. (2) Teachers professional development activities (3) Guidance and Counseling (4) Instructional Technology for Career Education Teachers (5) Program Improvement Activities including the purchasing of supplies and equipment.

**Major Highlights of the year:**

Consortia schools met or exceeded the state performance targets. Also teachers/students attended several outstanding professional development activities at the district, state, and national level because of the funding support our Consortium offers. The workshops were related to CTE student organizations and teacher leadership/management activities. The curriculum was improved, expanded, and modernized with each consortia member having the opportunity to participate. This activity supports the teachers efforts to have active FFA, FBLA, and FCCLA chapters.

Program Distance Learning  
 Funding Source Arkansas Department of Education Competitive Grant  
☐ Yes ☒ No

☒ Restricted ☐ Non-Restricted

**Participating Districts:**

<input checked="" type="checkbox"/> Batesville	<input checked="" type="checkbox"/> Concord	<input checked="" type="checkbox"/> Melbourne	<input checked="" type="checkbox"/> Norfolk
<input checked="" type="checkbox"/> Calico Rock	<input checked="" type="checkbox"/> Highland	<input checked="" type="checkbox"/> Midland	<input checked="" type="checkbox"/> Salem
<input checked="" type="checkbox"/> Cave City	<input checked="" type="checkbox"/> Izard County Consolidated	<input checked="" type="checkbox"/> Mountain Home	<input checked="" type="checkbox"/> Southside
<input checked="" type="checkbox"/> Cedar Ridge	<input checked="" type="checkbox"/> Mammoth Spring	<input checked="" type="checkbox"/> Mountain View	<input checked="" type="checkbox"/> Viola

**Personnel**

Name	Position	Degree
Alan Sherrell	Distance Learning/GT Support	M.S.E.

**Goal:**

***Our goal is to support and encourage quality distance learning experiences and ensure equity of opportunity for all Arkansas stakeholders. We strive to provide current information, training, and support; coordinate efficient use of resources; promote and expand quality 21st Century Distance Learning opportunities; and provide the vision for the future of the Arkansas K-12 Distance Learning Initiative.***

**Program Summary:**

The Arkansas Department of Education and the 15 State Cooperatives are connected through Compressed Interactive Video (CIV) Labs in the state. This CIV system also assists in state level meetings, professional development and graduate courses. The Distance Learning Coordinator oversees all technical aspects of the equipment housed in the labs of the school districts as well as the co-op. The DL Coordinator provides technical assistance and informational updates for all co-op schools. The DL Coordinator provides assistance and technical support for Virtual Field Trips at the co-op site and at the local school district.

**Major Highlights of the year:**

The DL highlights for the year were participating in the following trainings/programs: A College Career Readiness Planning Program (CCRPP) Grant was received in the fall of 2011. The Program was designed to assist high school students with ACT Prep. The classes were received using Distance Labs in each of the participating schools from the Distance Learning Labs from ASU/Mtn. Home, Ozarka College and UACCB. Classes were taught in math, Reading & English. Forty students from ICC, Calico Rock, Highland, Midland & Cedar Ridge participated in the program. The classes were taught over a 12 week period for a total of 75 hours of instruction in each subject area. DL Facilitators already in place in each

Program Gifted and Talented  
 Funding Source Arkansas Department of Education Competitive Grant  
☐ Yes ☒ No

☒ Restricted ☐ Non-Restricted

**Participating Districts:**

<input checked="" type="checkbox"/> Batesville	<input checked="" type="checkbox"/> Concord	<input checked="" type="checkbox"/> Melbourne	<input checked="" type="checkbox"/> Norfolk
<input checked="" type="checkbox"/> Calico Rock	<input checked="" type="checkbox"/> Highland	<input checked="" type="checkbox"/> Midland	<input checked="" type="checkbox"/> Salem
<input checked="" type="checkbox"/> Cave City	<input checked="" type="checkbox"/> IZARD County Consolidated	<input checked="" type="checkbox"/> Mountain Home	<input checked="" type="checkbox"/> Southside
<input checked="" type="checkbox"/> Cedar Ridge	<input checked="" type="checkbox"/> Mammoth Spring	<input checked="" type="checkbox"/> Mountain View	<input checked="" type="checkbox"/> Viola

**Personnel**

Name	Position	Degree
Jill Clogston	Gifted Education Specialist	Master's Degree

**Goal:**

*The goal of the Northcentral Arkansas Education Cooperative's Gifted and Talented Program is to assist member districts in coordinating, implementing, evaluating and improving local programs for gifted and talented children and youth.*

**Program Summary:**

The G/T Specialist serves as a liaison between the ADE/GT Office and Co-op Schools to assist with current developments and trends in gifted education. The coordinator works with state organizations of AGATE and AAGEA as well as the other State GT Specialists to design and implement public awareness and student programs. The G/T Specialist assists with technical assistance, staff development training, pre-monitoring, consultation with administrators, and student-centered activities such as Odyssey of the Mind, Arkansas Governor's Quiz Bowl, and Chess Association for Arkansas Schools.

**Major Highlights**

During the 2011-2012 school year the GT Specialist worked closely with new G/T Coordinators in the cooperative area and had the first G/T Workday at the cooperative to more effectively help the coordinators in writing and submitting their respective GT Program Approval applications to the ADE. All schools in the cooperative were indeed found to be in compliance with all the ADE- G/T Standards. The GT Specialist met monthly with the ADE and other GT Specialists to gather and exchange information on current trends, practices and programs in Gifted Education. The GT Specialist was elected President - Elect of Arkansans for Gifted and Talented Education (AGATE).



Program Literacy  
 Funding Source Arkansas Department of Education Competitive Grant  
☐ Yes ☒ No

☒ Restricted ☐ Non-Restricted

**Participating Districts:**

<input checked="" type="checkbox"/> Batesville	<input checked="" type="checkbox"/> Concord	<input checked="" type="checkbox"/> Melbourne	<input checked="" type="checkbox"/> Norfolk
<input checked="" type="checkbox"/> Calico Rock	<input checked="" type="checkbox"/> Highland	<input checked="" type="checkbox"/> Midland	<input checked="" type="checkbox"/> Salem
<input checked="" type="checkbox"/> Cave City	<input checked="" type="checkbox"/> IZARD County Consolidated	<input checked="" type="checkbox"/> Mountain Home	<input checked="" type="checkbox"/> Southside
<input checked="" type="checkbox"/> Cedar Ridge	<input checked="" type="checkbox"/> Mammoth Spring	<input checked="" type="checkbox"/> Mountain View	<input checked="" type="checkbox"/> Viola

**Personnel**

Name	Position	Degree
Lee Ferguson	Literacy Specialist	Masters in Education
Sharon Walker	Literacy Specialist	Masters in Education
Rhonda Taylor	Reading Recovery Teacher Leader	Masters in Education

**Goal:**

The Literacy Department strives to increase teachers' knowledge and implementation of current researched based practices through high quality professional development. Also, literacy specialists work to support teachers through integrated assessment and responsive instruction. The professional development provided is aligned to state and national standards in literacy. The literacy specialists each serve on core teams developed by the Arkansas Department of Education to study, write, and train quality professional development.

**Program Summary:**

Early Literacy Learning in Arkansas (ELLA) is a two-year professional development offered by the Arkansas Department of Education and the education service cooperatives. ELLA is aligned with the Common Core State Standards and is designed to assist K-1 teachers in the implementation of a comprehensive literacy classroom. Effective Literacy (ELF) is a two-year professional development designed for grades 2-4 to implement a comprehensive literacy approach in instruction, assessment and intervention. Effective Literacy is aligned with the Common Core State Standards. Reading Recovery is a short term early literacy intervention that provides intensive, individual instruction for the students with the lowest reading performance in first grade, as well as strategies for small group.

**Major Highlights of the year:**

Beyond providing the instruction for the professional development programs listed above, the literacy department also provided: Common Core State Standards overviews, instructional facilitator support, school site team meetings/professional learning communities support, data analysis, classroom observations, lesson planning support, model lessons, research-based best practices, advanced studies in literacy mentoring/coaching, school-based professional development linked to local school data, and collaboration with ADE in the writing and delivery of Moodle and face-to-face professional development.

**Program Mathematics Program****Funding Source** Arkansas Department of Education**Competitive Grant**☐ Yes ☒ No☒ Restricted ☐ Non-Restricted**Participating Districts**

<input checked="" type="checkbox"/> Batesville	<input checked="" type="checkbox"/> Concord	<input checked="" type="checkbox"/> Melbourne	<input checked="" type="checkbox"/> Norfolk
<input checked="" type="checkbox"/> Calico Rock	<input checked="" type="checkbox"/> Highland	<input checked="" type="checkbox"/> Midland	<input checked="" type="checkbox"/> Salem
<input checked="" type="checkbox"/> Cave City	<input checked="" type="checkbox"/> Izard Co. Consolidated	<input checked="" type="checkbox"/> Mtn. Home	<input checked="" type="checkbox"/> Southside
<input checked="" type="checkbox"/> Cedar Ridge	<input checked="" type="checkbox"/> Mammoth Spring	<input checked="" type="checkbox"/> Mtn. View	<input checked="" type="checkbox"/> Viola

**Personnel**

Name	Position	Degree
Tracey Owens	Mathematics Specialist	Education Specialist

**Goal:**

*To increase teacher knowledge and implementation of research based best practices through high quality professional development and knowledge of the Common Core State Standards for Mathematics. To provide mentoring for classroom teachers and administrators in implementing high-quality mathematics instruction. To provide professional development in mathematics instructional best practices and assessment as defined by the State Department of Education*

**Program Summary:**

NAESC, in partnership with the Arkansas Department of Education, administers the Mathematics Program for grades K-12, established by Act 1392 of 1999 for the improvement of mathematics instruction throughout Arkansas. Assistance is provided to schools through professional learning programs, demonstration lessons, teachers observations, and technical assistance in order to improve the teaching and learning of mathematics through increased content knowledge and improved instructional strategies across the curriculum.

**Major Highlights of the Year**

Common Core State Standards Overview

Team Meetings/Professional Learning Communities

Data Analysis

Lesson Planning

Three CGI level one sessions, two CGI level two sessions and one CGI level three session

Increased on-site technical assistance with schools in school improvement

Program Pathwise Mentoring Program  
 Funding Source Arkansas Department of Education Competitive Grant  
☐ Yes ☒ No

☒ Restricted ☐ Non-Restricted

**Participating Districts:**

<input checked="" type="checkbox"/> Batesville	<input checked="" type="checkbox"/> Concord	<input checked="" type="checkbox"/> Melbourne	<input checked="" type="checkbox"/> Norfolk
<input checked="" type="checkbox"/> Calico Rock	<input checked="" type="checkbox"/> Highland	<input checked="" type="checkbox"/> Midland	<input checked="" type="checkbox"/> Salem
<input checked="" type="checkbox"/> Cave City	<input checked="" type="checkbox"/> IZARD County Consolidated	<input checked="" type="checkbox"/> Mountain Home	<input checked="" type="checkbox"/> Southside
<input checked="" type="checkbox"/> Cedar Ridge	<input checked="" type="checkbox"/> Mammoth Spring	<input checked="" type="checkbox"/> Mountain View	<input checked="" type="checkbox"/> Viola

**Personnel**

Name	Position	Degree
Pam Brooks	Associate Director for Professional Development	MSE
Kay Brogdon	Retired Teacher	MSE
Lori Loggains	Elementary Principal	MSE
Ronnie Brooks	Elementary Teacher	Ed.S
Novella Humphrey	K-12 Literacy Specialist	MSE

**Goal:**

*The Pathwise Mentoring Program is designed to help novice teachers be a successful classroom teacher.*

**Program Summary:**

The Pathwise Mentoring program is a comprehensive mentoring, peer coaching, and observation system for novice teachers. It is designed to train effective and experienced teachers to become mentors of novice teachers. In the Pathwise/Mentoring/Observation system, mentors learn about the framework of essential teaching skills and practice derived from ETS research and presented in Charlotte Danielson's widely acclaimed book, *Enhancing Professional Practice: A Framework for Teaching*, 2nd edition (ASCD, 2007). This system is divided into four domains and 19 criteria. Mentors collaborate with and support the novice teacher by providing focused feedback with regard to instructional skills, classroom management, and professional behaviors as delineated by the Arkansas Pathwise Mentoring Model. The goal of mentoring is to ensure improvement, where necessary, and continuous professional growth for the novice teacher. Mentors assist the novice teacher in the development of the professional development plan, identification and celebration of strength areas, and identification of professional development opportunities.

**Major Highlights of the year:**

During the 2011-2012 year, 76 teachers were recalibrated in Pathwise and 36 teachers were trained in the Pathwise Mentoring model.

**Program** \_\_\_\_\_ **Media** \_\_\_\_\_  
**Funding Source** \_\_\_\_\_ **LEA's** \_\_\_\_\_ **Competitive Grant**  
☐ Yes ☒ No

☒ Restricted ☐ Non-Restricted

**Participating Districts:**

<input checked="" type="checkbox"/> Batesville	<input checked="" type="checkbox"/> Concord	<input checked="" type="checkbox"/> Melbourne	<input checked="" type="checkbox"/> Norfolk
<input checked="" type="checkbox"/> Calico Rock	<input checked="" type="checkbox"/> Highland	<input checked="" type="checkbox"/> Midland	<input checked="" type="checkbox"/> Salem
<input checked="" type="checkbox"/> Cave City	<input checked="" type="checkbox"/> IZARD County Consolidated	<input checked="" type="checkbox"/> Mountain Home	<input checked="" type="checkbox"/> Southside
<input checked="" type="checkbox"/> Cedar Ridge	<input checked="" type="checkbox"/> Mammoth Spring	<input checked="" type="checkbox"/> Mountain View	<input checked="" type="checkbox"/> Viola

**Personnel**

Name	Position	Degree
Becky Johnson	Media Manager	
Elaine Wilson	Media Paraprofessional	

*The Northcentral Arkansas Education Service Cooperative is committed to provide the Northcentral Arkansas Education Service Cooperative and our 16 school districts with media from daycare through 12th grade; to provide prompt, friendly service to all our schools; to improve student achievement by providing access to quality instructional materials; and to provide high quality professional development opportunities for all the educators across our region.*

**Program Summary:**

The NAESC Media Center provided an educational video collection for checkout by member school districts. Programs, books, pamphlets, text-based materials, models, and audio sets were available. The media center made regular deliveries and pickups at 68 buildings in the districts on a weekly basis. Every librarian, teacher and administrator in the co-op had access to the NAESC Online Media Catalog. As new materials were purchased, they were placed in the online catalog system. This allowed for immediate checkout. The media center also distributed educational materials for the Arkansas Department of Education and other state agencies. In addition, the media center provided services for local daycares, preschools, Head Start facilities and Alternative Learning Environments (ALE's).

**Major Highlights of the year:**

Handbooks for the ILLI and SI were created. Annual reports for the 2011-2012 were created. Many movies were purchased for Social Studies Curriculums. The Destiny/Follett's software was purchased for teachers to access for checkout through our online checkout system.

Program School Psychology Specialist/Behavior Consultant  
 Funding Source LEAs Competitive Grant  
☐ Yes ☒ No

☐ Restricted ☐ Non-Restricted

**Participating Districts:**

<input type="checkbox"/> Batesville	<input checked="" type="checkbox"/> Concord	<input checked="" type="checkbox"/> Melbourne	<input checked="" type="checkbox"/> Norfolk
<input checked="" type="checkbox"/> Calico Rock	<input type="checkbox"/> Highland	<input type="checkbox"/> Midland	<input checked="" type="checkbox"/> Salem
<input type="checkbox"/> Cave City	<input checked="" type="checkbox"/> IZARD County Consolidated	<input type="checkbox"/> Mountain Home	<input checked="" type="checkbox"/> Southside
<input type="checkbox"/> Cedar Ridge	<input type="checkbox"/> Mammoth Spring	<input checked="" type="checkbox"/> Mountain View	<input checked="" type="checkbox"/> Viola

**Personnel**

Name	Position	Degree
Lorita R. Phillips	School Psychology Specialist/Behavior Consultant	M.A. School Psychology

**Goal:**

*For 2 days per week, the SPS Program goal is to provide behavior consultation services to 8 participating school districts as needed in response to individual district requests.*

**Program Summary:**

In this program, the School Psychology Specialist provided behavioral consultation services upon request to participating districts. Some of these services included student observation, consultation with teachers, administrators, and parents, participation in IEP meetings relative to behavior, help with development of student behavior plans, assist districts with Manifestation Determination conferences and Functional Behavior Assessments.

**Major Highlights of the year:**

I reflect on the year with two cases prevalent in my mind. After consulting with his teacher, a fourth grade student with high functioning autism who was struggling with whining and work refusal, experienced improved behavior when simple adjustments were made to his interaction with classwork and teachers. A second student stands out as well due to her explosive history. Suggestions and educational materials provided to the educator during consultation resulted in changes in reactions thus improved behavior. As I do each year, the Behavior Module training for Paraprofessionals was provided in November. It is always rewarding to see understanding happen in adults who work with students with disabilities. So often the child's behavior is closely tied with the adults reaction so it is critical for the adults to react calmly to trying situations. It is rewarding to see a group of paraprofessionals gain that understanding because they are so often the first responders to incidents.

**Program** Science Program  
**Funding Source** Arkansas Department of Education **Competitive Grant**  
☐ Yes ☒ No

☒ Restricted ☐ Non-Restricted

**Participating Districts:**

<input checked="" type="checkbox"/> Batesville	<input checked="" type="checkbox"/> Concord	<input checked="" type="checkbox"/> Melbourne	<input checked="" type="checkbox"/> Norfork
<input checked="" type="checkbox"/> Calico Rock	<input checked="" type="checkbox"/> Highland	<input checked="" type="checkbox"/> Midland	<input checked="" type="checkbox"/> Salem
<input checked="" type="checkbox"/> Cave City	<input checked="" type="checkbox"/> Izard County Consolidated	<input checked="" type="checkbox"/> Mountain Home	<input checked="" type="checkbox"/> Southside
<input checked="" type="checkbox"/> Cedar Ridge	<input checked="" type="checkbox"/> Mammoth Spring	<input checked="" type="checkbox"/> Mountain View	<input checked="" type="checkbox"/> Viola

**Personnel**

Name	Position	Degree
Gayle Ross	Science Specialist	MSE Biology

**Goal:**

To increase teacher awareness and implementation of current best practices in science education through high quality professional development. To increase awareness and conversations about the Next Generation Science Standards.

**Program Summary:**

The Science Specialist provides technical assistance to science teachers as well as model lessons and problem solving strategies. This includes assistance with designing lessons to meet Arkansas frameworks using the 5E/7E lesson planning model, instructional facilitation training for years 1 and 2 and 3, and professional development specific to the needs of the science teachers in the Northcentral Arkansas Education Service Cooperative area. Discussion of and planning for the Next Generation Science Standards is the latest area of need.

**Major Highlights of the year:**

One of the major highlights of the year was the training and support of 30 instructional facilitators, five completed year 1 and 2, while 25 completed year three. Twenty nine teachers who participated in the third and final year of the Science Academy for Middle School teachers were mentored, this is an MSP grant funded long term professional development. The release and study of the Framework for K-12 Science Education, and subsequent release and study of a draft of science standards is an addition highlight.

Program Special Education Annual Report

Funding Source

State and LEAs

Competitive Grant

☐ Yes ☒ No

☐ Restricted ☐ Non-Restricted

Participating Districts:

<input type="checkbox"/> Batesville	<input type="checkbox"/> Concord	<input type="checkbox"/> Melbourne	<input checked="" type="checkbox"/> Norfolk
<input checked="" type="checkbox"/> Calico Rock	<input type="checkbox"/> Highland	<input type="checkbox"/> Midland	<input type="checkbox"/> Salem
<input type="checkbox"/> Cave City	<input type="checkbox"/> IZARD County Consolidated	<input type="checkbox"/> Mountain Home	<input type="checkbox"/> Southside
<input type="checkbox"/> Cedar Ridge	<input checked="" type="checkbox"/> Mammoth Spring	<input checked="" type="checkbox"/> Mountain View	<input checked="" type="checkbox"/> Viola

**Personnel**

Name	Position	Degree
Carroll Manry	Special Education Supervisor	MSE + 24
Martin Estes	Special Education Supervisor	MSE + 30

**Goal:**

*Special Education Supervisors are responsible to supervise and administer all district programs for disabled children ages 3-21. The supervisors provide consultation to special education personnel in the districts, initiate and administer programs to locate and evaluate students with suspected disabilities. Supervisors monitor approved policies, procedures and guidelines. LEA Supervisors provide consultative assistance to regular and special education teachers who have students with disabilities, developed and recommend the district special education plan activities, as well as receive from and provide information to parent and professional organizations.*

**Program Summary:**

Special Education Supervisors provide in-service and training covering the most recent guidelines and regulation changes to inform special education teachers annually. NAESC area districts are faced each year with due process hearings as well as federal investigations conducted by the office of civil rights, the school districts administrators count on the Special Education Supervisors to guide and assist in these difficult situations. Special Education expenditures for the NAESC service area are in excess of several million dollars. The Special Ed. Supervisor consulted with local districts to help budget these expenditures. One of the key duties of the Special Ed. Supervisor position is to act as a liaison between the public school and the Arkansas Department of Education. The Supervisor employed by NAESC have managed to fill this task as well as live up to the expectations of the local districts and the ADE.

**Major Highlights of the year:**

The Special Education Supervisors have been successful in the supervision of all assigned schools. No complaints or due-process hearings have been conducted during the 2011-2012 school year. Two schools were monitored by the State Special Education Department and had no significant problem areas.



Program Teacher Center ~ Professional Development; Curriculum Development Assistance;  
Resources  
 Funding Source Base Funds Competitive Grant  
☒ Yes ☒ No

☒ Restricted ☐ Non-Restricted

**Participating Districts:**

<input checked="" type="checkbox"/> Batesville	<input checked="" type="checkbox"/> Concord	<input checked="" type="checkbox"/> Melbourne	<input checked="" type="checkbox"/> Norfolk
<input checked="" type="checkbox"/> Calico Rock	<input checked="" type="checkbox"/> Highland	<input checked="" type="checkbox"/> Midland	<input checked="" type="checkbox"/> Salem
<input checked="" type="checkbox"/> Cave City	<input checked="" type="checkbox"/> IZARD County Consolidated	<input checked="" type="checkbox"/> Mountain Home	<input checked="" type="checkbox"/> Southside
<input checked="" type="checkbox"/> Cedar Ridge	<input checked="" type="checkbox"/> Mammoth Spring	<input checked="" type="checkbox"/> Mountain View	<input checked="" type="checkbox"/> Viola

**Personnel**

Name	Position	Degree
Mark Gipson	Associate Director for Professional Development	MSE
Bobbie Jo Smith	Administrative Assistant	
Penny Price	Administrative Assistant	BSE
Becky Johnson	Media Manger	
Elaine Wilson	Media Paraprofessional	

**Goal:**

*The Teacher Center~Professional Development program is designed to provide prompt, friendly service to all our schools; to improve student achievement by providing access to quality instructional materials; to provide high quality professional development opportunities for all educators across our region in order to build content knowledge and research-based instructional strategies to assist students in meeting rigorous academic standards that prepare them to be college and career ready; to provide curriculum development assistance as schools transition from frameworks to Common Core State Standards; and, to serve as a liaison between our districts and the Arkansas Department of Education.*

**Program Summary:**

**Teacher Center:** NAESC Teacher Center provides a hands-on worksite for our teachers to use in making their own instructional materials, including posters, bulletin boards, bookbinding, label making, games, laminating, and Ellison cut-outs. Throughout the school year, teachers place requests for instructional materials and/or die cuts either by phone or through email to the media department. Once the order is completed, the materials from the Center are delivered to their campus the next week via the media delivery. Local preschools, daycares, Head Start facilities, and Alternative Learning Environments (ALEs) utilize this service for educational purposes too. In addition, local college students and community patrons utilize the center.

**Professional Development:** Professional Development opportunities target focus areas as outlined by the Arkansas Department of Education to meet the requirements of the law regarding the required 60 hours as well as meeting the needs of schools based upon needs assessment survey results and Classroom Walkthrough (CWT) data from the 16 districts served. The Teacher Center Coordinator has the primary responsibility for reviewing, along with the Teacher Center Committee, the data sets from the districts in planning PD to meet the major needs of the districts.

The Teacher Center Coordinator has the primary responsibility for planning and implementing the Professional Development for member school districts. All cooperative districts as well as other educators from across the state have access to participate in a wide number of professional development opportunities offered at NAESC throughout the year. During the 2012 summer, NAESC offered 142 workshops with over 2,766 people attending.

In addition to the summer professional development offerings, NAESC offered a wide variety of long term systemic professional development offerings throughout the year. These sessions were designed to help educators with implementation of programs back at their districts. The Teacher Center Coordinator works

with districts, co-op curriculum specialists, and the Arkansas Department of Education to arrange such services. Schools interested in receiving campus based professional development must contact the cooperative specialists to arrange these services.

The Teacher Center Coordinator produces an annual summer catalog that is printed and distributed to each member district. All events are placed on the Cooperative's website and in escWorks for online registration. The catalog is given to districts two to three weeks prior to active registration of summer professional development workshops. This allows building principals to work with individual teachers to develop professional growth plans as required by law. For three-fourths of the year, educators used the online registration system, escWorks, to register for events, document participation and keep a record of all attended trainings. In April, the Cooperative began piloting the new online registration system, My Events inside the Arkansas IDEAS web portal. These online registration systems allowed the Cooperative to assist schools in documenting the required sixty hours of professional development. At the end of summer, reports on participation are given to each district superintendent and building principal. In addition, similar reports are given quarterly to superintendents and building principals in order to help districts maintain current professional development records.

**Major Highlights of the year:**

**Common Core Professional Development Opportunities; Capacity Building Through: CGI Leadership Training; Instructional Facilitation Training; Math Coach & Science Coach Consortium; Literacy IF Training; Principal Sessions; and Job-Alike Sessions**

**Program** Technology Center Coordinator  
**Funding Source** Arkansas Department of Education

**Competitive Grant**  
☒ Yes ☐ No

☒ Restricted ☐ Non-Restricted

**Participating Districts:**

<input checked="" type="checkbox"/> Batesville	<input checked="" type="checkbox"/> Concord	<input checked="" type="checkbox"/> Melbourne	<input checked="" type="checkbox"/> Norfolk
<input checked="" type="checkbox"/> Calico Rock	<input checked="" type="checkbox"/> Highland	<input checked="" type="checkbox"/> Midland	<input checked="" type="checkbox"/> Salem
<input checked="" type="checkbox"/> Cave City	<input checked="" type="checkbox"/> IZARD County Consolidated	<input checked="" type="checkbox"/> Mountain Home	<input checked="" type="checkbox"/> Southside
<input checked="" type="checkbox"/> Cedar Ridge	<input checked="" type="checkbox"/> Mammoth Spring	<input checked="" type="checkbox"/> Mountain View	<input checked="" type="checkbox"/> Viola

**Personnel**

Name	Position	Degree
Jeff Johnston	Technology Center Coordinator	BSE, MSE

**Goal:**

*The Technology Coordinator will update all specialists and coordinators on Arkansas IDEAS and ADE iTunes U; provide technical assistance to co-op staff and district Technology Coordinators; meet with district Tech Coordinators to discuss access to, and implementation of Arkansas IDEAS, ADE iTunes U, and other online professional development programs.*

**Program Summary:**

The Technology Coordinator works with co-op staff to ensure all have current technology to utilize in their positions, as well as supporting all technology owned by the co-op. He also provides school districts with information and training concerning technology. This information is coordinated with ADE, DIS, and APSCN. The Technology Coordinator also works closely with school tech staff to assist them with determining hardware and software needs, and assists them with creating specifications and acquiring quotes as needed.

**Major Highlights of the year:**

1.) Worked with AR IDEAS staff during testing and implementation of My Events online registration system. 2.) Participated on a committee with ADE to create the State Technology Plan. 3) Participated on the DIS Statewide Network Committee and Video subcommittees to assist with development of specs for upgrading statewide network and video network infrastructure.

Program Target Interim Assessment  
 Funding Source LEAs Competitive Grant  
☐ Yes ☒ No

☒ Restricted ☐ Non-Restricted

**Participating Districts:**

<input checked="" type="checkbox"/> Batesville	<input type="checkbox"/> Concord	<input checked="" type="checkbox"/> Melbourne	<input type="checkbox"/> Norfolk
<input type="checkbox"/> Calico Rock	<input checked="" type="checkbox"/> Highland	<input checked="" type="checkbox"/> Midland	<input type="checkbox"/> Salem
<input type="checkbox"/> Cave City	<input checked="" type="checkbox"/> IZARD County Consolidated	<input checked="" type="checkbox"/> Mountain Home	<input checked="" type="checkbox"/> Southside
<input type="checkbox"/> Cedar Ridge	<input type="checkbox"/> Mammoth Spring	<input type="checkbox"/> Mountain View	<input type="checkbox"/> Viola

**Personnel**

Name	Position	Degree
Penny Price	Target Testing Paraprofessional	BSE

**Goal:**

*The program goal is to provide school districts with data from quarterly targeted formative assessments. Also, to assist schools in the analysis of testing data to help make informed instructional decisions resulting in increased student achievement in math, science, and literacy.*

**Program Summary:**

The Northcentral Arkansas Educations Service Cooperative provided services for the Target Interim Assessment project during the 2011-2012 school year. This is an assessment project that provides data from quarterly formative assessments to help guide instructional decisions at a teacher and district level. It is the intent of the project to raise student achievement in math, science, and literacy through the effective analysis and use of student data. The students record their answers on scan sheets that are sent to the co-op to be scanned. Once the sheets are scanned, the data is made available for teachers and administrators in the D2SC system. This is an electronic data reporting system that stores local and state assessment data. Support for analyzing test data as well as navigating and using the D2SC site is provided by the Northcentral Arkansas Education Service Cooperative. Through the electronic scoring and generating of reports through D2SC, districts have been able to make instructional decisions that are supported by year long data that are aligned with their district curricula.

**Major Highlights of the year:**

This program allowed teachers to look at individual student assessment data as well as classroom data to make informed instructional decisions.

**Special Projects & Programs****Northcentral Arkansas Education Service Cooperative****Funding Source**Arkansas Department of Education☒ **Restricted**      ☐ **Non-Restricted**

Detailed below are descriptions of special projects or programs in which state funding provided services regionally or statewide. These projects or programs provided an opportunity for this cooperative to participate, although the cooperatives serving as fiscal agents varied.

**Program Name:** *CGI-Cognitively Guided Instruction***Competitive Grant:** Yes X No       

**Goals and Description:** Cognitively Guided Instruction (CGI) is a teacher professional development program that has teachers exploring a framework for how elementary school children learn concepts of number operations and early algebra. This knowledge is used to drive instruction. Years 2 and 3 of training builds upon the previous year's training--resulting in a true, long-term sustained professional development program. What teachers learn in a CGI institute enhances how they implement any curriculum or resource materials into their daily classroom instruction.

**Program Name:** *Classroom Walkthrough Reflection of High Yield Strategies***Competitive Grant:** Yes        No X

**Goals and Description:** The goal of this training was to examine the use of classroom walkthrough data in a PLC setting. Participants have access to the High Yield Strategy course in Arkansas IDEAS. Many participants worked to plan for differentiating supporting to teachers. Training materials were provided to all participants to assist them in sharing the information with other educators.

**Program Name:** *Classroom Walkthrough Train the Trainers***Competitive Grant:** Yes X No       

**Goals and Description:** With the approval of Teachscape, Arkansas was able to adapt Teachscape's version of the Classroom Walkthrough (CWT) process to meet the needs of Arkansas educators. Because of this, the Arkansas Department of Education Professional Development Unit sponsored Train-the-Trainer sessions for all Cooperatives and the Tri-Districts to send participants to become trainers for their perspective sites. During this four-day training, participants learned more about helping instructional leaders continually improve and adapt classroom practices by combining the Classroom Walkthrough process with innovative data collection technology. These educators were instructed on the easy-to-use data collection, analysis, and reporting tools coupled with a classroom walkthrough process that provides a framework for reflective discussions, data analysis, action planning, and progress monitoring.

**Program Name:** *Enhancing Education Through Technology Grant (TIE) Project***Competitive Grant:** Yes X No       

**Goals and Description:** The purpose of the TIE project is to increase technology integration across the state of Arkansas. Southwest Arkansas Education Co-op wrote a comprehensive partnership EETT grant to develop a statewide professional development module system to embrace all forms of technology, meet the needs of teachers and administrators, and address State standards and licensure issues while enhancing instruction through integrated technology practices. All education cooperatives across the state were offered the opportunity to train teachers from their area to become TIE Cadre members. There are currently 114 TIE Cadre members impacting 71 districts and 80 buildings across the state. Cadre members have conducted over 300 workshops across the state on 72 different technology modules. The trainings have impacted 5,000 teachers and administrators. The modules are all project based and have been developed by teachers. Modules include trainings on things such as Blogs, Classroom Wikis, High Yield Strategies with Technology, Internet Safety, Podcasting and Video Editing. Modules are housed on the TIE website at <http://tie.k12.ar.us>. By sharing these modules across the state, we are able to offer the same quality in technology trainings that we did not have before. The cadre members not only train for the education co-ops in the summer but are also able to help train in their buildings and districts. Module development and professional growth are the focus of cadre trainings. Each cadre meets three times a year. Trainings are held on Thursday night, all day Friday and Saturday until noon to minimize time out of the classroom.

Program Name: *Instructional Facilitating*

Competitive Grant: Yes \_\_\_\_\_ No X

Goals and Description: Instructional facilitating Training is based on Dr. Jim Knight's Instructional Coaching Institute from the University of Kansas Center for Research on Learning. The training refines the Instructional Facilitator's understanding of their various roles and distinguishes between effective and ineffective coaching practices. The training also provides leadership skills for reform, fostering internal commitment in others, and determining when it is or is not appropriate for modeling in a classroom.

Program Name: *Literacy Decision Makers*

Competitive Grant: Yes X No \_\_\_\_\_

Goals and Description: The purpose of this grant was to provide funding to support Literacy Decision Maker's Training sessions and regional Smart Accountability sessions.

Program Name: *Smart Accountability Leadership Training*

Competitive Grant: Yes \_\_\_\_\_ No X

Goals and Description: This grant was made available by the Arkansas Department of Education to support Smart Accountability Leadership Training series. Each cooperative had the opportunity to host a training for district leadership teams provided by Dr. Tom Many. The leadership training focused on the specific use of professional learning teams to analyze student work and develop common assessments. The goal of this special project was to build leadership capacity of district leadership teams and to give district leadership teams tools needed to further extend the work done through PLCs to improve teaching and learning.

Program Name: *Specialist's Unit Meetings*

Competitive Grant: Yes \_\_\_\_\_ No X

Goals and Description: Math Unit meetings are organized so that K-12 Mathematics Specialists from all cooperatives and STEM centers convene on a monthly basis as a professional learning community. Mathematics specialists receive professional development that is current, research based, and data driven. The meetings also provide time for mathematics specialists to set goals, create and organize statewide PD, and assess impact on existing programs. Currently, an in-depth study of the Common Core State Standards continues as school districts transition from our current frameworks to the Common Core in Mathematics. Literacy Unit Meetings take place monthly for all state literacy specialists to convene as a professional learning community. This time is built by a state level team to brainstorm, share, execute, and receive professional development that is data-driven to impact student achievement. Training of trainers in ELLA, ELF, C.L.A.S.S, Content Literacy, and other state level trainings have taken place over the past year. Currently, an in-depth study of the Common Core State Standards continues as school districts in Arkansas ready for implementation with dedicated support from the specialists.

Event Name	Event Date	Credits	Event Capacity	Number Attended	Districts Attended	Cancelled?
NAESC Shop Safety	6/1/2011 8:30	6	30	11	9	No
NAESC Instructional Leader's Institute	6/7/2011 8:00	18	100	78	17	No
NAESC Culinary Arts	6/7/2011 8:30	18	6	0	0	Yes
NAESC Business Educators Conference	6/13/2011 8:30	18	50	19	13	No
NAESC Thinkfinity: How Educational Web Portals Can Help Your District Align with the Common Core State Standards	6/13/2011 8:30	6	24	17	8	No
NAESC Brewing up Good Science	6/13/2011 8:30	12	30	23	8	No
NAESC Coming Attractions for Grades 7 and 8 Mathematics: Algebraic Thinking!	6/13/2011 8:30	12	24	23	12	No
NAESC Poetry Now! Join the Revolution!	6/13/2011 8:30	6	24	7	5	No
NAESC Debbie Diller's Using Classrooms More Effectively for Instruction	6/13/2011 8:30	6	150	120	19	No
NAESC Jump Over to Creativity	6/14/2011 8:30	6	24	8	5	No
NAESC Gifted and Talented Curriculum Workshop	6/14/2011 8:30	6	30	15	11	No
NAESC Assessment Training: DIBELS & OSA	6/14/2011 8:30	6	100	10	6	No
NAESC Literacy + Technology = Gearing up for Common Core!	6/14/2011 8:30	12	24	16	10	No
NAESC Running Mechanics & Speed Clinic	6/14/2011 8:30	6	5	0	0	Yes
NAESC Best Practices in the Evaluation of Students with Disabilities: From Referral to Decision	6/14/2011 8:30	6	80	28	252	No
NAESC Superintendent's Institute	6/14/2011 9:00	16	23	22	15	No
NAESC Developing the Eight Mathematical Practices with Primary Students	6/15/2011 8:30	12	50	45	13	No
NAESC Classroom Management, Effective Instruction and Student Motivation	6/15/2011 8:30	12	80	38	14	No
NAESC Basic Archery	6/15/2011 8:30	6	7	0	0	Yes
NAESC Instructional Facilitator training on the SIM Unit Organizer and planning session	6/16/2011 8:30	6	44	14	7	No
NAESC APSN FMS Fiscal Year End	6/16/2011 9:00	3	24	17	14	No
NAESC Are We Still Having Fun?	6/20/2011 8:30	6	80	21	10	No
NAESC BOB MEATI Producing Proficient and Advanced Writers	6/20/2011 8:30	12	44	20	9	No
NAESC Microsoft Word 2007	6/20/2011 8:30	6	25	21	11	No
NAESC Effective Literacy Year II	6/20/2011 8:30	18	15	9	8	No
NAESC Meeting the Challenge of Protecting Children Online	6/20/2011 8:30	6	150	22	12	No
NAESC U. S. Marshals Museum and Clinton Library	6/21/2011 8:30	3	25	21	9	No
NAESC Term-Papers Made Easy with Microsoft Word	6/21/2011 8:30	6	5	0	0	Yes
NAESC Suicide Prevention and Smart Choices, Better Chances	6/21/2011 8:30	6	25	20	12	No
NAESC Overview of Common Core State Standards	6/21/2011 12:30	3	24	16	10	No
NAESC Microsoft Excel 2007 (Grades K-5)	6/22/2011 8:30	6	24	14	8	No
NAESC Agri Workshop	6/22/2011 8:30	12	50	18	13	No
NAESC Those Bloomin' Verbs	6/22/2011 8:30	12	5	0	0	Yes
NAESC Literacy Intervention K.I.T.S. (Kids Improve To Succeed) for K-1	6/22/2011 8:30	6	40	17	10	No
NAESC Literacy Intervention K.I.T.S. (Kids Improve to Succeed) for Grades 2 - 4	6/23/2011 8:30	6	20	18	10	No
NAESC 3D Made Easy	6/23/2011 8:30	12	12	0	0	Yes
NAESC Microsoft Excel 2007 (Grades 6-12)	6/23/2011 8:30	6	18	18	11	No
NAESC Nancy Kaufman's Childhood Apraxia of Speech	6/23/2011 8:30	6	8	7	2	No
NAESC Bloom's Taxonomy Goes Digital	6/27/2011 8:30	6	24	14	8	No
NAESC Back to the Basics	6/27/2011 8:30	6	15	13	8	No
NAESC Professional Learning Communities with Tom Many	6/27/2011 8:30	6	80	21	11	No
NAESC Making Fitness Fun	6/28/2011 8:30	6	40	20	9	No
NAESC C.L.A.S.S.	6/28/2011 8:30	18	67	63	12	No
NAESC Designing and Creating Effective Video Podcasts	6/28/2011 8:30	6	24	22	10	No
NAESC High School Math and the Common Core State Standards	6/28/2011 8:30	12	40	32	13	No
NAESC Biology-Data Analysis, lesson planning and Classification and Cladograms	6/28/2011 8:30	6	10	6	6	No
NAESC ELIA YR II (Early Literacy Learning in Arkansas) 2011-2012	6/28/2011 8:30	18	17	12	6	No
NAESC Pathwise Mentor Training	6/28/2011 8:30	18	0	0	0	Yes
NAESC Functional Approach to Training	6/29/2011 8:30	6	15	13	6	No
NAESC Biology-Molecular Genetics	6/29/2011 8:30	6	4	0	0	Yes
NAESC Section 504: Survival Kit	6/29/2011 8:30	6	150	20	7	No



NAESC Teaching The Gifted in the Secondary Content	6/30/2011 8:30	6	44	9	7 No
NAESC Quick and Useful Classroom Reading and Literacy Assessments	6/30/2011 8:30	6	24	16	9 No
NAESC Biology-Photosynthesis and Cellular Respiration	6/30/2011 8:30	6	10	9	6 No
NAESC Heat Illness and Emergency Action Plans	7/6/2011 10:00	15	44	25	6 No
NAESC The Gift of Stories: Making and Writing Books for Children	7/11/2011 8:30	6	20	9	7 No
NAESC Kuder Navigator Training Session	7/11/2011 8:30	6	24	10	7 No
NAESC Arkansas History: The Natural State's Animals	7/11/2011 8:30	3	100	83	16 No
NAESC iPads for Classroom Usage	7/11/2011 8:30	6	43	41	9 No
NAESC Building Positive Relationships to Promote Parental Involvement?	7/11/2011 8:30	3	60	30	13 No
NAESC HeartSaver and AED Training	7/11/2011 8:30	3	12	11	7 No
NAESC Writing Behavior Plans	7/11/2011 8:30	6	20	14	9 No
NAESC Building Positive Relationships to Promote Parental Involvement?	7/11/2011 12:30	3	60	38	10 No
NAESC Arkansas History Grades 4 to 12: Flu Pandemic of 1918	7/11/2011 12:30	3	100	46	15 No
NAESC Art Object Lessons	7/12/2011 8:30	18	30	9	9 No
NAESC Worksheets Don't Grow Dendrites	7/12/2011 8:30	6	150	76	14 No
NAESC APSN FMS - Cycle 8 Instructions	7/12/2011 9:00	3	24	14	10 No
NAESC Reading Recovery and Common Core Standards	7/13/2011 8:30	6	20	9	6 No
NAESC Worksheets Don't Grow Dendrites	7/13/2011 8:30	6	250	199	4 No
NAESC Pre-AP: Strategies in Mathematics	7/13/2011 8:30	12	40	0	0 Yes
NAESC Writing to Learn for Vocational Teachers	7/13/2011 8:30	6	24	16	7 No
NAESC iTunes U in the Classroom	7/13/2011 8:30	6	24	22	7 No
NAESC Fact Fluency Grades 3-4	7/13/2011 8:30	12	40	37	11 No
NAESC Worksheets Don't Grow Dendrites	7/14/2011 8:00	6	150	63	2 No
NAESC Reading Recovery: Making the MOST out of Our DATA	7/14/2011 8:30	6	15	9	7 No
NAESC Using Probeware Technology in Science for Beginners	7/14/2011 8:30	6	20	9	5 No
NAESC Shooting Sports	7/14/2011 8:30	12	30	14	6 No
NAESC Digital Storytelling in the Classroom	7/14/2011 8:30	6	24	20	11 No
NAESC Are Rational Numbers Rational?	7/18/2011 8:30	12	28	27	11 No
NAESC Pathwise Mentor Training	7/18/2011 8:30	18	3	17	10 No
NAESC ELA Teachers: Boost Your Lessons with Technology!	7/18/2011 8:30	40	0	0	0 No
NAESC CGI Year 2 (11-12) Group One	7/18/2011 8:30	6	24	9	6 No
NAESC ELA YR 1 (Early Literacy Learning in Arkansas) 2011-2012	7/18/2011 8:30	24	11	11	5 No
NAESC Engaging the 21st-Century World Language Learner: Teaching Languages in a New Age	7/18/2011 8:30	12	150	6	6 No
NAESC Teacher Evaluation Phase 1 Training	7/18/2011 8:30	18	15	14	6 No
NAESC Comprehensive Intervention Model (CIM) Overview	7/19/2011 8:30	18	20	7	4 No
NAESC Project Director's Meeting	7/19/2011 8:30	3.5	24	13	12 No
NAESC Administrator's Forum: Initial Accreditation Reports-How to respond.	7/20/2011 8:30	3	1	0	0 Yes
NAESC Pre-AP: Interdisciplinary Strategies for English & Social Studies	7/20/2011 8:30	12	40	0	0 Yes
NAESC Administrator's Forum: Course Codes and Scheduling	7/20/2011 8:30	3	20	7	5 No
NAESC Meeting the Needs of Your Students with Research-Based Strategies for Students in Poverty and Low-Performing Schools:	7/20/2011 8:30	12	150	0	0 Yes
NAESC Educators in Industry	7/20/2011 8:30	6	50	0	0 Yes
NAESC Arkansas History Day with Dr. Michael Dougan	7/21/2011 8:30	6	25	20	12 No
NAESC Pathwise Recalibration	7/21/2011 8:30	6	40	39	13 No
NAESC Heat Illness and Emergency Action Plans	7/22/2011 10:00	1.5	44	3	3 No
NAESC Argumentative Writing for CCSS	7/25/2011 8:00	12	150	28	11 No
NAESC Effective Literacy, Year 1, 2011-2012	7/25/2011 8:30	18	19	18	5 No
NAESC Overview of the 2010 Charlie May Simon (4-8) and Arkansas Diamond Award (K-2)	7/25/2011 8:30	3	25	8	8 No
NAESC Integrate Technology Across the Curriculum Using the Civil Rights Movement	7/25/2011 8:30	6	24	7	4 No
NAESC CGI Year 1 (11-12) Group Three	7/25/2011 8:30	24	36	34	3 No
NAESC CGI Year 1 (11-12) Group One	7/25/2011 8:30	24	33	30	7 No

NAESC So Many Picture Books, So Little Time	7/25/2011 8:30	6	150	33	13 No
NAESC Arkansas Teen Award	7/25/2011 12:30	3	10	6	6 No
NAESC Pre Open Enrollment Kickoff Meeting	7/25/2011 12:30	1.5	24	18	15 No
NAESC Enhancing Education Through Technology	7/26/2011 8:30	6	24	18	10 No
NAESC Slavery and Slave Resistance in Arkansas	7/26/2011 8:30	6	24	24	12 No
NAESC Teacher Evaluation Phase I Training	7/26/2011 8:30	18	27	27	8 No
NAESC Distance Learning Instruction Training Workshop	7/26/2011 8:30	12	6	0	0 Yes
NAESC There's an App for That: iPads and How to Use Them in Your Class	7/27/2011 8:30	6	31	32	10 No
NAESC Write What You Don't Know	7/27/2011 8:30	6	150	0	0 Yes
NAESC My Triand for Triand System Administrators and Account Users	7/27/2011 8:30	3	24	2	1 No
NAESC Heartsaver and AED training	7/27/2011 8:30	3	6	0	0 Yes
NAESC My Triand for Counselors/Registrars	7/27/2011 12:30	3	24	6	5 No
NAESC D2SC Training	7/28/2011 0:30	3	24	3	3 No
NAESC The Acoustic to Linguistic Continuum of Processing	7/28/2011 8:00	6	24	9	7 No
NAESC Writing Nonfiction with the Boring Parts Removed	7/28/2011 8:30	6	180	0	0 Yes
NAESC NetTrekker Training	7/28/2011 8:30	3	24	4	4 No
NAESC School Yard Habitat/Outdoor Classroom	7/28/2011 8:30	6	24	18	10 No
NAESC CGI Year 1 (11-12) Group Two	7/28/2011 8:30	24	36	34	4 No
NAESC Arts Integration - Math on the Move 2	8/1/2011 8:30	12	15	10	5 No
NAESC Contemporary Issues in Health Education	8/1/2011 8:30	6	40	9	7 No
NAESC Content Literacy for Social Studies Teachers	8/1/2011 8:30	12	40	35	13 No
NAESC Descriptive Writing for Grades K-1	8/1/2011 8:30	6	21	19	8 No
NAESC Autism Spectrum Disorders: Assessment to Curriculum Development	8/1/2011 8:30	12	50	32	13 No
NAESC So Many Books, So Little Time!	8/2/2011 8:30	6	150	61	16 No
NAESC Descriptive Writing for Grades 2-4	8/2/2011 8:30	6	24	20	8 No
NAESC CGI Year 3 (11-12)	8/2/2011 8:30	18	32	32	12 No
NAESC CGI Year 2 (11-12) Group Two	8/3/2011 8:30	18	9	9	3 No
NAESC Content Literacy for Science Teachers	8/3/2011 8:30	12	40	27	13 No
NAESC Cool Tools	8/3/2011 8:30	12	24	19	10 No
NAESC Getting Acquainted with your Growing with Mathematics (GWM) and Connected Mathematics Project (CMP) curriculum	8/4/2011 8:30	6	20	6	3 No
NAESC ADE Adequate Yearly Progress Videoconference	8/4/2011 13:00	3.5	30	9	5 No
NAESC Improving Test Scores for FACS Teachers	8/5/2011 8:30	6	20	0	0 Yes
NAESC APSCN FMS - Cycle 9 Instructions	8/8/2011 8:30	3	24	13	10 No
NAESC Pathwise Recalibration	8/8/2011 8:30	6	40	19	9 No
NAESC Heartsaver and AED training	8/8/2011 8:30	3	8	9	4 No
NAESC Heartsaver and AED training	8/8/2011 12:30	3	6	0	0 No
New User Workshop	8/10/2011 9:00	6	22	0	0 No
NAESC Distance Learning Instruction Training Workshop	8/11/2011 8:30	12	44	0	0 No
NAESC Child Nutrition CIV	8/11/2011 13:00	3	24	17	9 No
NAESC Root Cause Analysis Training for ADE Specialist	8/16/2011 8:30	6	9	9	2 No
NAESC Ethics Training	8/18/2011 13:00	1	7	7	1 No
NAESC Pathwise Mentor Training	8/24/2011 8:00	18	4	19	4 No
Vision Screening Certification for School Nurses	8/25/2011 8:30	4	22	6	4 No
NAESC 1 hour Lottery Training	8/25/2011 9:00	1	60	12	6 No
NAESC Tier I Training	8/25/2011 10:00	4	60	32	18 No
New Tech High Schools (ADE STEM WORKS)	8/25/2011 11:00	1	40	3	2 No
Hearing Screening Certification	8/25/2011 13:00	3.5	20	6	4 No
GT Teleconference	8/26/2011 8:30	6	40	16	16 No
NAESC 2011-2012 CIV Conversations	8/26/2011 8:30	6	3	3	1 No
On-Site-Review Updates	8/29/2011 9:00	3	40	18	8 No
Instructional Facilitators Training Year 1 2011-2012	8/30/2011 8:30	12	6	6	3 No
NAESC Pathwise Recalibration	8/31/2011 8:00	6	30	15	3 No

Sociosis Screening Certification for School Nurses	8/31/2011 8:30	3.5	22	6	251 No
BMI Screening	8/31/2011 13:00	2.5	22	7	5 No
AP Teleconference	9/1/2011 8:30	3	40	5	5 No
NORMES ED/STATS Web Portal Training	9/1/2011 8:30	6	24	0	0 Yes
NAESC Child Nutrition CV	9/1/2011 13:00	3	40	0	0 Yes
My Triand for Triand System Administrators	9/6/2011 9:00	3	23	0	0 Yes
NAESC My Triand for Triand System Administrators and Account Users	9/6/2011 9:00	3	23	12	3 No
State Reporting Cycle 1-9 Training	9/7/2011 9:00	6	40	33	251 No
ACSIP Work Day	9/8/2011 8:30	6	40	4	3 No
APSCN Medical Record Training	9/8/2011 9:00	6	22	9	7 No
NAESC Literacy Coach Mentoring	9/12/2011 8:30	6	24	8	7 No
NAESC Beginning Administrator's Forum	9/13/2011 9:00	3	40	0	0 Yes
NAESC APSCN Discipline Workshop	9/13/2011 9:00	3.5	24	8	3 No
NAESC APSCN FMS - Cycle 1 Training & 2-7 updates	9/13/2011 9:00	3	24	9	6 No
NAESC G/T Coordinator's Meeting	9/14/2011 9:00	5	23	9	9 No
NAESC Library Media Specialist's Meeting	9/15/2011 8:30	5.5	40	24	8 No
On-Site-Review Updates	9/15/2011 9:00	3	40	13	4 No
Instructional Facilitators Training Year 3 2011-12	9/19/2011 8:30	6	24	24	7 No
NAESC Tech Meeting	9/19/2011 9:00	4	24	11	252 No
NAESC Pre-AP: Strategies in Science-Creating a Learner-Centered Classroom	9/20/2011 8:30	12	30	17	10 No
NAESC Special Health Care Needs Training for School Nurses	9/21/2011 9:00	3	20	0	0 Yes
NAESC Overview of AIP-IRI-HAP and NORMES Ed. STATS Web Portal Training	9/22/2011 8:30	6	23	18	6 No
NAESC ELIA YR I (Early Literacy Learning in Arkansas) 2011-2012	9/22/2011 8:30	24	12	10	5 No
Overview of AIP-IRI-HAP	9/22/2011 8:30	6	24	0	0 Yes
NAESC Growing Up WILD	9/23/2011 8:30	6	50	18	3 No
NAESC Effective Literacy Year II	9/26/2011 8:30	18	10	8	6 No
NAESC 3 Hour Lottery Training	9/26/2011 8:30	3	40	5	5 No
NAESC Cognos Connection	9/27/2011 9:00	3.5	24	19	5 No
NAESC 2011-2012 CIV Conversations	9/28/2011 8:30	6	4	4	1 No
Teaching the Gifted in the Secondary Content Classroom	9/28/2011 8:30	6	40	10	6 No
Laying the Foundation for Middle School Science Teachers Year 1	9/29/2011 8:30	12	34	34	15 No
NAESC CGI Year 1 (11-12) Group One	9/29/2011 8:30	24	40	40	9 No
NAESC Statewide CIV for Mathematics Instructional Facilitators, Mathematics Building Level Content Leads, and Administrators	9/29/2011 8:30	5	70	29	11 No
NAESC CGI Year 1 (11-12) Group One	9/30/2011 8:30	24	28	28	8 No
NAESC Report Card Workshop	10/5/2011 9:00	6	24	6	4 No
NAESC Child Nutrition CV	10/6/2011 8:30	24	34	34	5 No
NAESC CGI Year 1 (11-12) Group Three	10/6/2011 13:00	3	40	6	5 No
NAESC CWT (Classroom Walk-Through 3.0)	10/7/2011 8:30	24	35	35	5 No
NAESC Effective Literacy, Year I, 2011-2012	10/11/2011 8:30	12	30	13	6 No
NAESC ELIA YR II (Early Literacy Learning in Arkansas) 2011-2012	10/12/2011 8:30	18	18	17	5 No
Instructional Facilitators Training Year 2 2011-2012	10/13/2011 7:30	18	21	19	7 No
NAESC ELIA YR II (Early Literacy Learning in Arkansas) 2011-2012	10/13/2011 8:30	24	7	7	3 No
NAESC High School (7-12) Introduction to the Common Core State Standards	10/17/2011 7:30	18	9	8	5 No
NAESC ECSSA/M86 Training	10/17/2011 8:30	6	50	16	8 No
NAESC 2011-2012 CIV Conversations	10/18/2011 9:00	12	24	14	252 No
NAESC Academic Facilities and Transportation Master Plan Training	10/19/2011 8:30	6	5	5	1 No
NAESC 2011-2012 CIV Conversations	10/20/2011 9:00	2	30	4	4 No
NAESC 2011-2012 CIV Conversations	10/21/2011 8:30	6	5	5	1 No
NAESC Literacy Coach Mentoring	10/21/2011 12:30	6	6	3	1 No
2011-2012 Fall Counselor's Update	10/27/2011 8:00	6	8	8	6 No
NAESC CGI Year 2 (11-12) Group Two	10/27/2011 8:30	6	60	32	14 No
	10/28/2011 8:30	18	9	9	3 No

NAESC Instructional Leader's Meeting	11/1/2011 9:00	5	70	26	11 No
NAESC Child Nutrition CV	11/9/2011 13:00	3	40	14	7 No
NAESC Foundations of Special Education ParaProfessional Training	11/7/2011 8:30	6	50	14	6 No
NAESC C.L.A.S.S.	11/9/2011 8:30	18	29	23	4 No
NAESC ELIA YR I (Early Literacy Learning in Arkansas) 2011-2012	11/9/2011 8:30	24	12	10	5 No
NAESC CGI Year 1 (11-12) Group Two	11/10/2011 8:00	24	14	13	3 No
NAESC C.L.A.S.S.	11/10/2011 8:30	18	41	36	9 No
NAESC CGI Year 1 (11-12) Group Two	11/11/2011 8:00	24	28	28	4 No
NAESC Teacher Center Committee Meeting	11/14/2011 9:00	6	30	9	7 No
NAESC C.L.A.S.S.	11/15/2011 8:30	18	28	24	3 No
NAESC CWT (Classroom Walk-Through 3.0	11/15/2011 8:30	12	13	12	6 No
NAESC Behavior ParaProfessional Training	11/15/2011 8:30	6	22	10	6 No
Instructional Facilitators Training Year 3 2011-12	11/15/2011 8:30	6	24	23	7 No
NAESC C.L.A.S.S.	11/16/2011 8:30	18	41	30	7 No
NAESC Arkansas Continuity of Operations Program (ACOP)	11/16/2011 9:00	6	24	6	6 No
NAESC APSCN FMS Fixed Assets, Termination of Employees, and Deletion of Old Calendars	11/17/2011 9:00	3	24	13	11 No
NAESC CGI Year 3 (11-12)	11/29/2011 8:00	18	29	29	10 No
NAESC AP Coordinators Training	11/29/2011 8:30	6	24	6	5 No
NAESC School Demographics Workshop	11/29/2011 9:00	10	24	9	4 No
NAESC CGI Year 3 (11-12)	11/30/2011 8:00	18	30	30	11 No
NAESC CGI Year 2 (11-12) Group One	12/1/2011 8:00	24	17	15	1 No
NAESC Statewide CV for Mathematics Instructional Facilitators, Mathematics Building Level Content Leads, and Administrators	12/1/2011 8:30	5	70	37	11 No
Instructional Facilitators Training Year 3 2011-12	12/1/2011 8:30	6	19	12	7 No
NAESC School Special Education Workshop	12/1/2011 9:00	10	24	11	251 No
NAESC Child Nutrition CV	12/1/2011 13:00	3	40	8	3 No
Instructional Facilitators Training Year 2 2011-2012	12/2/2011 8:00	24	7	7	4 No
NAESC CGI Year 2 (11-12) Group Two	12/2/2011 8:00	18	19	17	3 No
NAESC Common Core State Standards Conversations with Dr. Tracy Tucher	12/5/2011 9:00	3	60	31	13 No
NAESC Special Health Care Needs Training for School Nurses	12/5/2011 12:00	3	24	3	3 No
NAESC ParaProfessional Cultural Awareness	12/6/2011 8:30	6	50	0	0 Yes
NAESC Arkansas Common Core State Standard Strategic Plan	12/8/2011 9:00	3	50	20	8 No
NAESC Literacy Coach Mentoring	12/12/2011 8:00	6	9	5	5 No
NAESC G/T Coordinator's Meeting	12/12/2011 9:00	5	23	13	13 No
Instructional Facilitators Training Year 2 2011-2012	12/13/2011 8:30	24	6	0	0 Yes
NAESC Best Practices in the Psycho-educational Evaluation Process	12/13/2011 9:00	3.5	20	10	3 No
NAESC APSCN FMS W-2's, 1099's, and Calendar Year End	12/13/2011 9:00	3	24	12	8 No
NAESC Effective Literacy, Year 1, 2011-2012	12/14/2011 8:30	18	20	20	7 No
NAESC Procurement Training	12/14/2011 13:00	2	50	9	6 No
NAESC Promethian Board Training	12/15/2011 8:00	6	6	6	2 No
NAESC 2011-2012 CV Conversations	12/16/2011 8:00	6	3	3	1 No
NAESC ParaProfessional Early Childhood Module	1/3/2012 8:30	6	50	0	0 Yes
NAESC CGI Year 2 (11-12) Group One	1/12/2012 8:00	24	16	15	1 No
NAESC CGI Year 2 (11-12) Group Two	1/13/2012 8:00	18	19	16	3 No
NAESC CWT (Classroom Walk-Through 3.0	1/17/2012 8:30	12	14	12	6 No
NAESC Science Fair Informational and Planning Meeting	1/18/2012 8:30	3	25	13	8 No
Instructional Facilitators Training Year 2 2011-2012	1/19/2012 8:30	24	8	8	3 No
NAESC 2011-2012 CV Conversations	1/20/2012 8:30	6	5	1	1 No
NAESC Federal Coordinators Meeting	1/20/2012 9:00	3	24	12	12 No
NAESC Emergency Rules Governing Gizaagon Administration in Schools for School Nurses	1/23/2012 9:00	3	40	26	252 No
NAESC Special Health Care Needs Training for School Nurses	1/23/2012 13:00	3	40	3	2 No
Instructional Facilitators Training Year 3 2011-12	1/25/2012 8:30	6	22	22	8 No
NAESC Effective Literacy, Year 1, 2011-2012	1/25/2012 8:30	18	19	17	5 No

NAESC 20 Best Apps for iPads	1/25/2012 12:00	3	24	11	8 No
NAESC Instructional Leader's Meeting	1/26/2012 9:00	5	60	32	13 No
NAESC Facilitating Learning for Teachers and Students with Stephen Barkley	1/27/2012 8:30	6	70	7	5 No
NAESC CGI Year 1 (11-12) Group One	1/27/2012 8:30	24	26	26	7 No
NAESC Teacher Center Committee Meeting	1/30/2012 9:00	6	50	15	11 No
NAESC Arkansas Common Core State Standards Assessment Literacy	1/31/2012 8:30	6	60	9	4 No
NAESC eSchool Scheduling Workshop Part 1	1/31/2012 9:00	15	24	14	4 No
NAESC Student-Centered Coaching with Diane Sweeney	2/2/2012 8:30	6	24	4	3 No
NAESC Para-professional Literacy Module	2/2/2012 8:30	6	22	7	2 No
NAESC Prads III Prep for Novice Teachers and Mentors	2/2/2012 9:00	4	60	23	9 No
NAESC Child Nutrition CIV	2/2/2012 13:00	3	40	6	5 No
NAESC Transition from PreK Special Ed to School-age Special Ed	2/3/2012 8:30	5	60	38	11 No
NAESC ASBA Risk Management Workers Comp. Workshop	2/7/2012 9:00	1.5	60	17	13 No
NAESC Statewide CIV Session for Literacy and CCSS 6-12	2/15/2012 9:00	6	60	3	1 No
Instructional Facilitators Training Year 2 2011-2012	2/16/2012 8:00	24	7	7	3 No
NAESC CGI Year 1 (11-12) Group Three	2/17/2012 8:00	24	34	33	5 No
NAESC 2011-2012 CIV Conversations	2/17/2012 8:30	6	5	3	1 No
NAESC Para-professional Low Incidence Module	2/21/2012 8:30	6	22	0	0 Yes
Laying the Foundation for Middle School Science Teachers Year 1	2/21/2012 8:30	12	34	30	14 No
NAESC ELIA YR I (Early Literacy Learning in Arkansas) 2011-2012	2/21/2012 8:30	24	12	8	5 No
NAESC Literacy Coach Mentoring	2/28/2012 8:00	6	9	8	6 No
NAESC Cognos Query Studio	2/28/2012 9:00	6	24	6	5 No
NAESC Statewide CIV for Mathematics Instructional Facilitators, Mathematics Building Level Content Leads, and Administrators	2/29/2012 8:30	5	60	18	8 No
Instructional Facilitators Training Year 3 2011-12	3/1/2012 8:00	6	6	6	4 No
NAESC Child Nutrition CIV	3/1/2012 13:00	3	40	15	8 No
NAESC eSchool Scheduling Workshop Part 2	3/5/2012 9:00	10	24	10	4 No
NAESC Para-professional Secondary Module	3/6/2012 8:30	6	50	0	0 Yes
NAESC Federal Coordinators Meeting	3/7/2012 9:00	3	24	7	7 No
NAESC Newly Revised Physical Education/Health Curriculum Frameworks and Driver Education Course Goals	3/8/2012 9:00	2	40	1	1 No
NAESC Connecting the Common Core and the Community for the Whole Child: A Community Conversation	3/8/2012 17:00	2	9	9	6 No
NAESC Effective Literacy Year II	3/12/2012 8:00	18	9	9	5 No
NAESC Arkansas Common Core State Standards Planning for Formative Assessment	3/13/2012 9:00	6	60	8	3 No
NAESC Alternative Education Program Description Training	3/13/2012 14:00	1	40	4	4 No
NAESC How to Bill Medicaid for Personal Care	3/14/2012 9:00	1	60	7	6 No
NAESC Teacher Retirement Changes/EFT	3/15/2012 9:00	3	24	20	15 No
NAESC 2011-2012 CIV Conversations	3/16/2012 8:30	6	5	0	0 Yes
NAESC ELIA YR I (Early Literacy Learning in Arkansas) 2011-2012	3/27/2012 8:30	24	11	11	5 No
NAESC Instructional Leader's Meeting	3/29/2012 9:00	5	60	29	13 No
NAESC Reading Recovery Continuing Contact	3/30/2012 9:00	3	15	0	0 Yes
NAESC Teacher Center Committee Meeting	4/5/2012 9:00	6	50	12	9 No
NAESC Child Nutrition CIV	4/5/2012 13:00	3	40	11	5 No
NAESC Tech Meeting	4/12/2012 9:00	4	24	14	252 No
NAESC Effective Literacy Year II	4/16/2012 8:00	18	11	11	8 No
NAESC C.L.A.S.S.	4/16/2012 8:30	18	38	29	7 No
NAESC Literacy Coach Mentoring	4/17/2012 8:00	6	6	6	5 No
NAESC Effective Literacy Year II	4/19/2012 8:00	18	10	10	5 No
NAESC 2011-2012 CIV Conversations	4/20/2012 8:30	6	5	0	0 Yes
NAESC Overview of the Common Core State Standards for Literacy for Grades 3 through 8	4/23/2012 8:30	6	70	35	12 No
NAESC eSchool Attendance Training Workshop	4/24/2012 9:00	6	24	8	4 No
NAESC ELIA YR II (Early Literacy Learning in Arkansas) 2011-2012	4/25/2012 8:00	18	9	9	4 No
NAESC eSchool Discipline Training Workshop	4/25/2012 9:00	6	24	8	4 No
NAESC Effective Literacy Year II	4/26/2012 8:00	18	6	6	3 No

NAESC Overview of the Common Core State Standards for Mathematics for Grades 3 through 8	4/26/2012 8:30	6	72	21	8 No
NAESC eSchool Medical Training Workshop	4/26/2012 9:00	6	24	7	4 No
NAESC C.L.A.S.S.	4/27/2012 8:30	18	33	19	7 No
NAESC ELA YR II (Early Literacy Learning in Arkansas) 2011-2012	4/30/2012 8:00	18	14	14	6 No
NAESC CGI Year 1 (11-12) Group Two	4/30/2012 8:00	24	28	28	3 No
NAESC Statewide CIV Session for Literacy and CCSS K-12	4/30/2012 9:00	6	60	1	1 No
NAESC G/T Coordinator's Meeting	5/1/2012 9:00	5	50	13	12 No
NAESC Child Nutrition CIV	5/3/2012 13:00	3	40	6	6 No
NAESC Tech Meeting	5/7/2012 8:30	4	24	13	252 No
NAESC ADMINISTRATOR JO FORUM (HANDBOOK RECOMMENDATIONS)	5/7/2012 9:00	3	60	15	9 No
NAESC ECSSA/MBE Training	5/7/2012 12:30	12	24	13	252 No
NAESC CGI Year 3 (11-12)	5/8/2012 8:30	18	27	27	9 No
NAESC Year End Payroll, Reference Table & Budget Unit Clean-Up, Getting 36/37 Reports Cleaned Up	5/8/2012 9:00	3	24	12	9 No
NAESC CGI Year 3 (11-12)	5/9/2012 8:00	18	26	26	8 No
NAESC New Arkansas Educator Licensure System (AELS)	5/9/2012 13:00	1	40	0	0 Yes
NAESC Science Fair Informational and Planning Meeting	5/10/2012 8:30	3	24	8	4 No
NAESC Arkansas Common Core State Standards Learning Progressions	5/10/2012 9:00	6	50	1	1 No
NAESC Course Codes and Scheduling (Elementary)	5/14/2012 8:30	3	60	0	0 Yes
NAESC Course Codes and Scheduling (High School)	5/14/2012 12:30	3	60	0	0 Yes
NAESC Statewide CIV for Mathematics Instructional Facilitators, Mathematics Building Level Content Leads, and Administrators	5/16/2012 8:30	5	60	6	5 No
NAESC 2011-2012 CIV Conversations	5/16/2012 8:30	6	1	0	0 No
NAESC Fun with Technology	5/30/2012 8:30	6	5	4	1 No